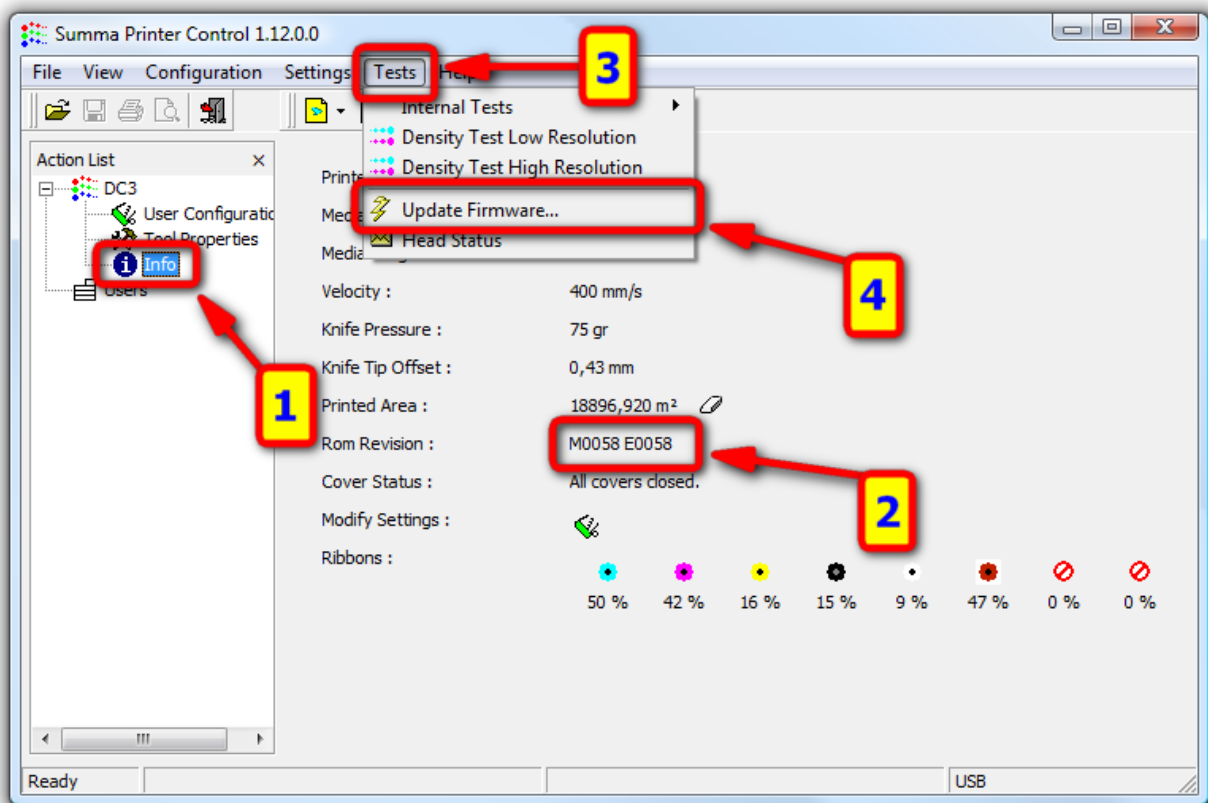


Firmware upgrade of a DC3-DC4-DC4sx

This procedure describes how to upgrade the firmware on a Summa DC series printer.

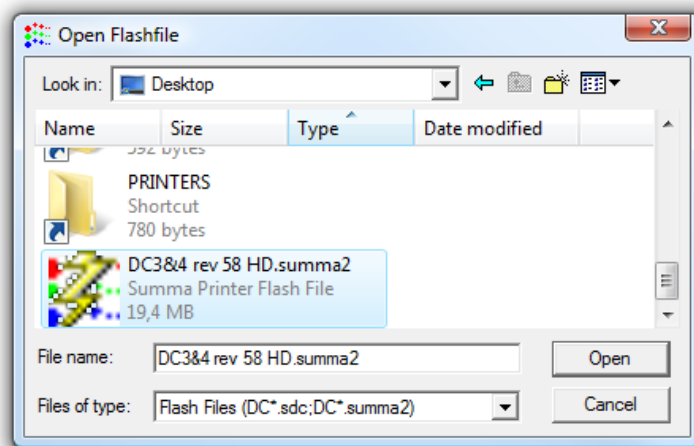
FIRMWARE UPGRADE

You can check the current firmware version with Summa Printer Control. Clicking on Info (1) will read some information from the printer and displays the Firmware Revision (2).

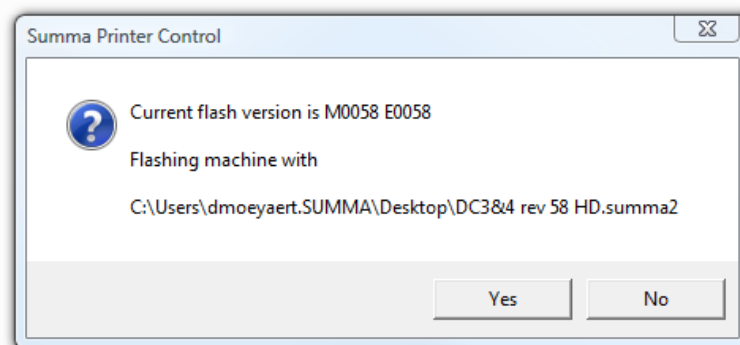


It may be necessary to upgrade the firmware in order to be able to use the latest features or additional spot colors

Click on Tests (3) and Update Firmware... (4). Navigate to the folder where you downloaded the latest firmware and select the new firmware.



Summa Printer Control then asks to confirm to upgrade the printer with the selected file:



This will start the upgrade.

You can follow the progress on the display of the printer.

This consists of several steps:

- Transmitting and upgrading the test files on the hard disk

```
RECEIVING SYSTEM  
FILE:  
SYSPART:basetest.sdc  
2306048-2468175
```

- Transmitting the new firmware for the main board

```
UPGRADING CODE  
PROCESSING DATA  
36%  
PLEASE WAIT
```

- Erasing the flash memory of the main board

```
UPGRADING MAIN  
ERASING  
SECTOR: 9/17  
PLEASE WAIT
```

- Programming the flash memory of the main board

```
UPGRADING MAIN  
PROGRAMMING  
SECTOR: 10/17  
PLEASE WAIT
```

- Transmitting the new firmware for the engine board

```
UPGRADING ENGINE  
READING DATA  
42%  
PLEASE WAIT
```

- Erasing the flash memory of the engine board

```
UPGRADING ENGINE  
ERASING  
SECTOR: 11/19  
PLEASE WAIT
```

- Programming the flash memory of the engine board

```
UPGRADING ENGINE  
PROGRAMMING  
SECTOR: 12/19  
PLEASE WAIT
```

When the next message (Upgrading Engine Done, Turn Power Off) is displayed on the LCD, you need to power down and then power up the printer to complete the upgrade.

```
UPGRADING ENGINE  
DONE  
  
TURN POWER OFF
```

Revised October 10, 2019