

INDUSTRY LABELS

USER GUIDE LABEL REWINDER



Art. Nr.: L-AU10



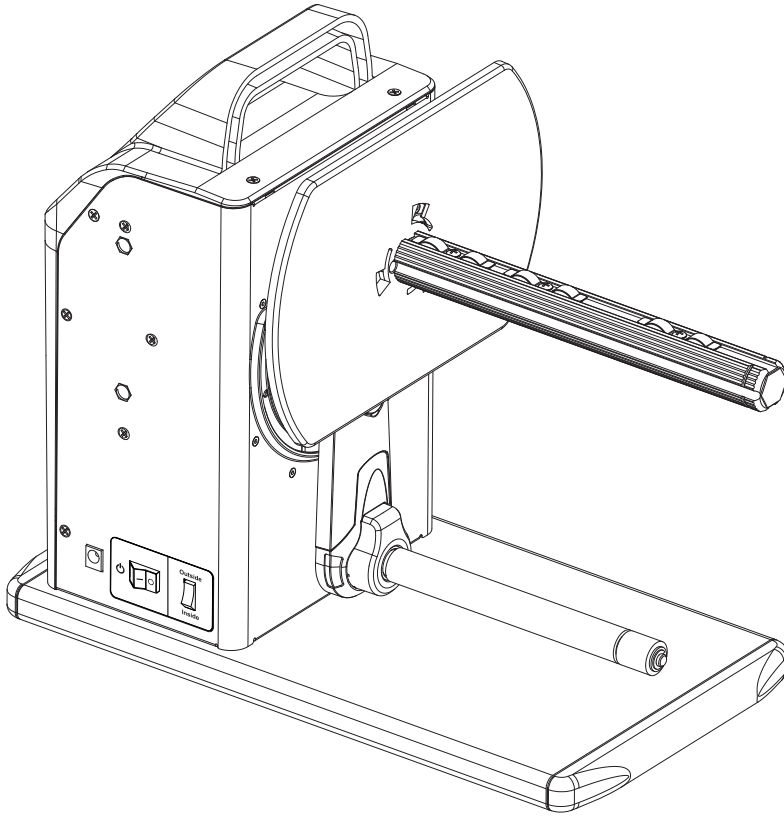
T20 USER GUIDE

CONTENTS

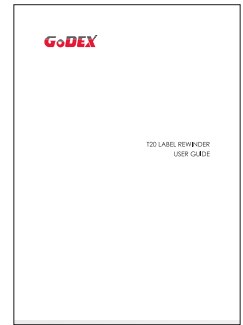
- 1 **Box Contents****
 - 2 **Getting to Know Your T20 Rewinder****
 - Device Overview
 - 3 **Setting Up the Rewinder****
 - Connection
 - Loading the Label
 - Install the Plate
 - Remove the Plate
 - Label Core in Different Sizes
 - Match Up the Empty Label Core and Core Adapter
 - The Modes of Rewinding
 - 4 **What's the Status of the Rewinder****
 - LED Indicator
 - When the Rewinder is Full
 - 5 **Troubleshooting****
 - Sensing Error
 - Idle Load
- Appendix**
- Product Specifications

1 BOX CONTENTS

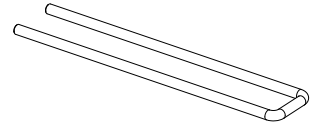
- Label Rewinder



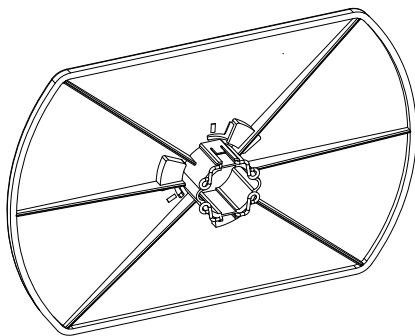
- User Guide



- Paper Clip

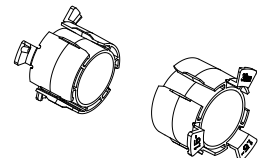


- Paper Stop Plate

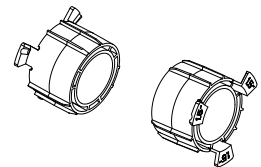


- 1.5'' Adapter

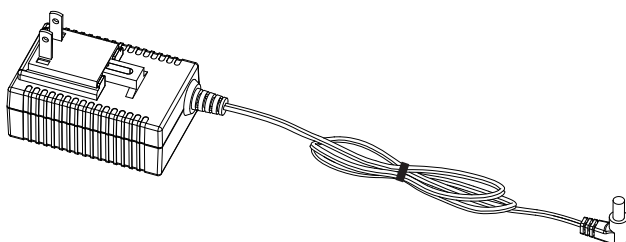
38 mm



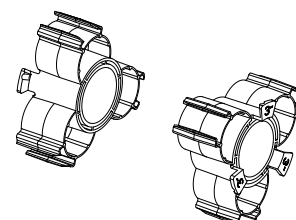
40 mm



- Power Adapter



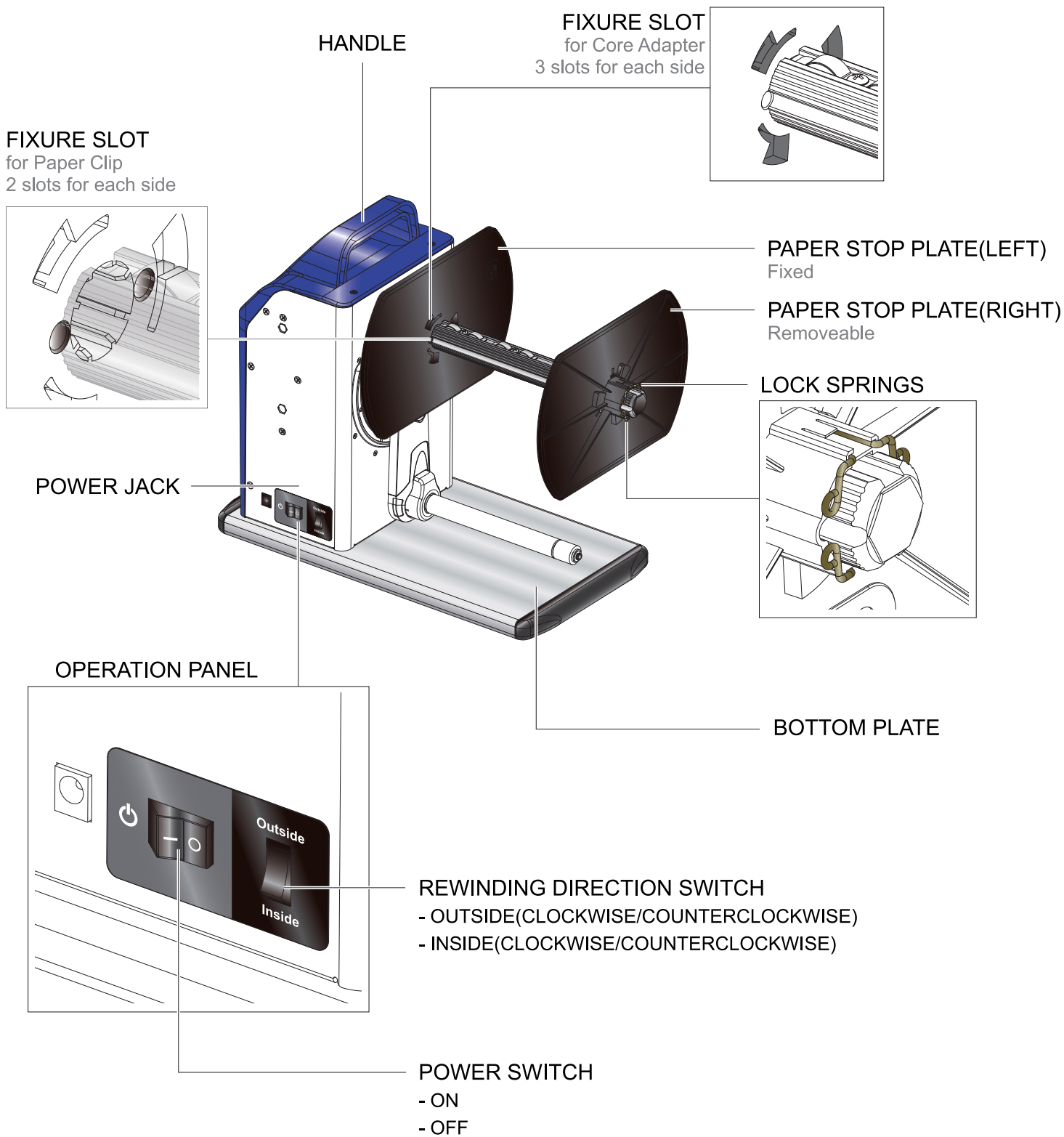
- 3'' Adapter



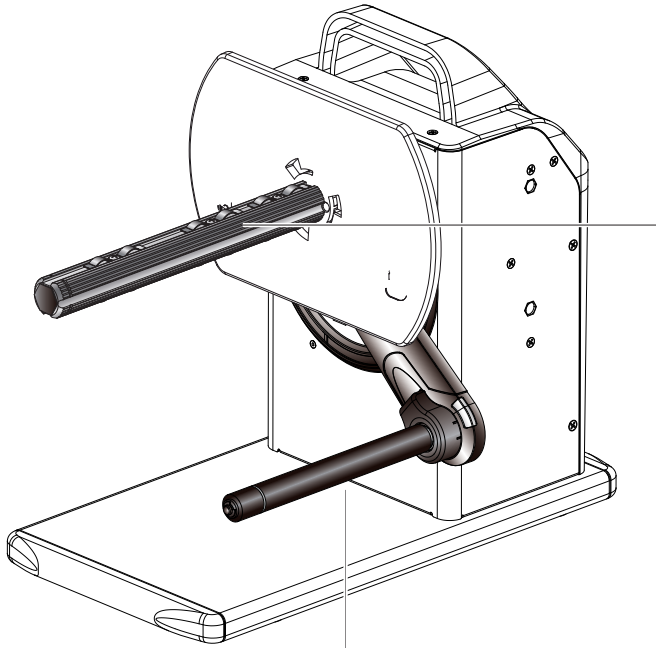
2 GETTING TO KNOW YOUR T20 REWINDER

Device Overview

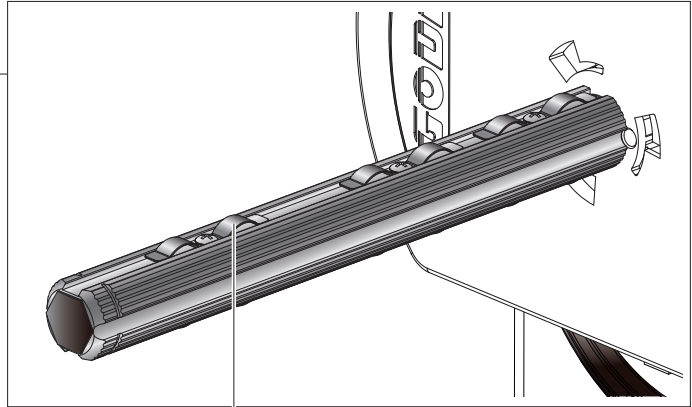
- Front View



- Rear View



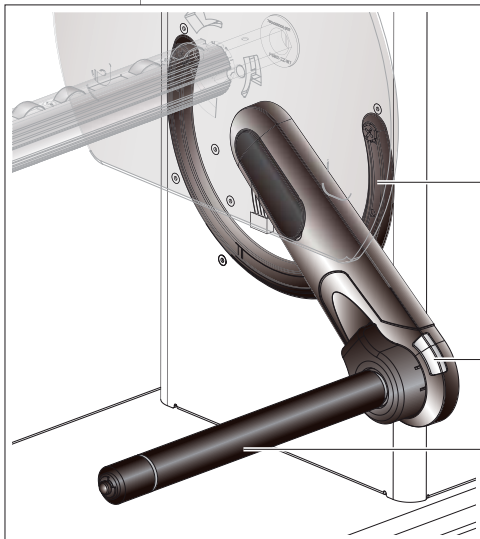
LABEL REWINDING SHAFT



SPRING SLICE

CONTROL MECHANISM

- Start
- Direction
- Status



GUIDE TRACK

LED INDICATOR

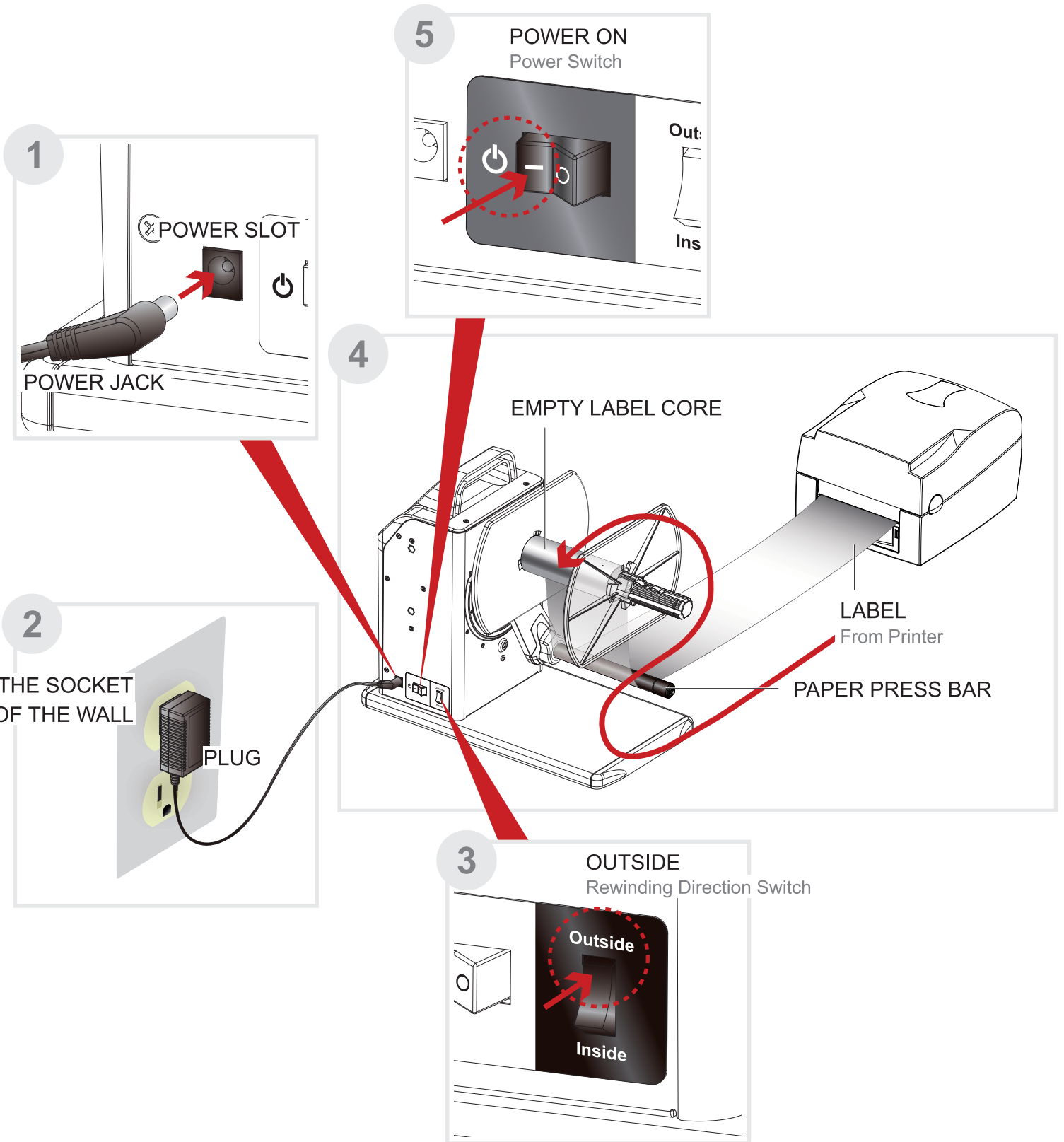
PAPER PRESS BAR



Be Clean

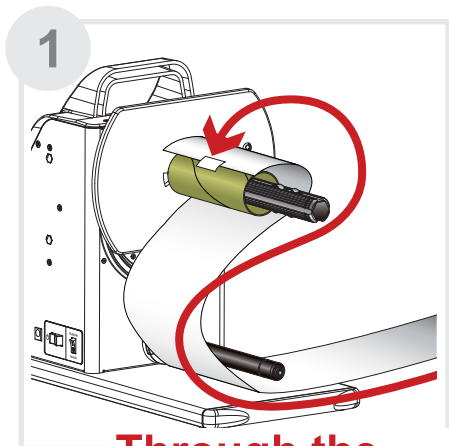
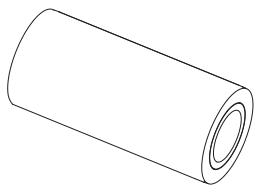
3 SETTING UP THE REWINDER

Connection

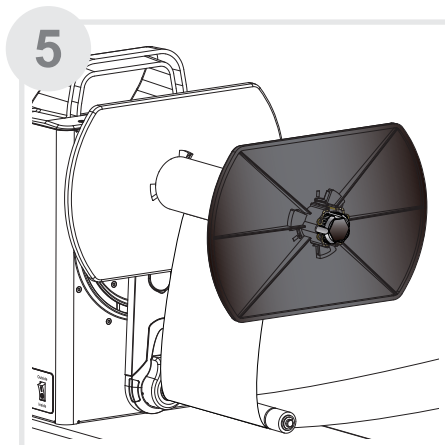
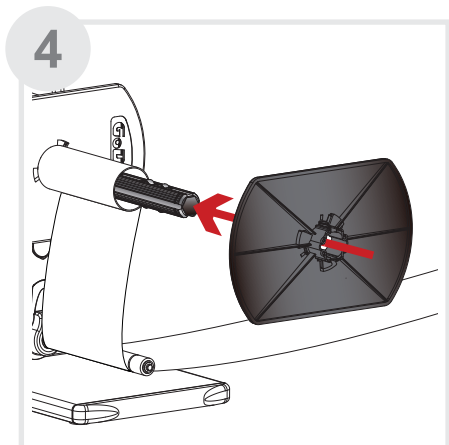
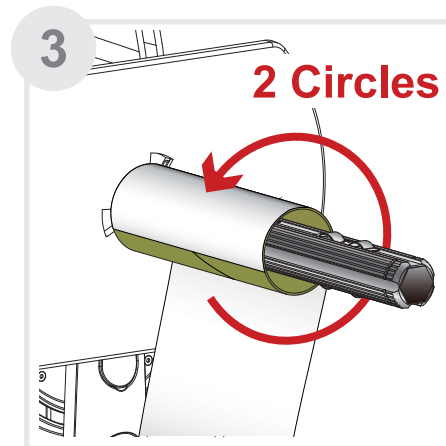
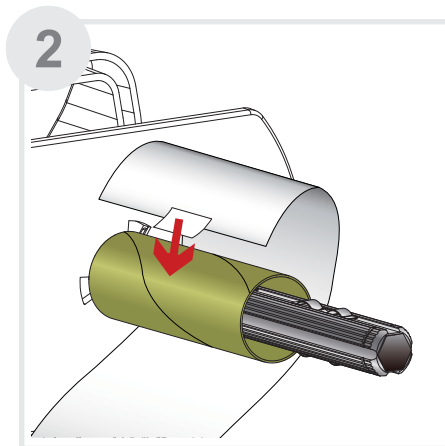


Loading the Label

Label Stock

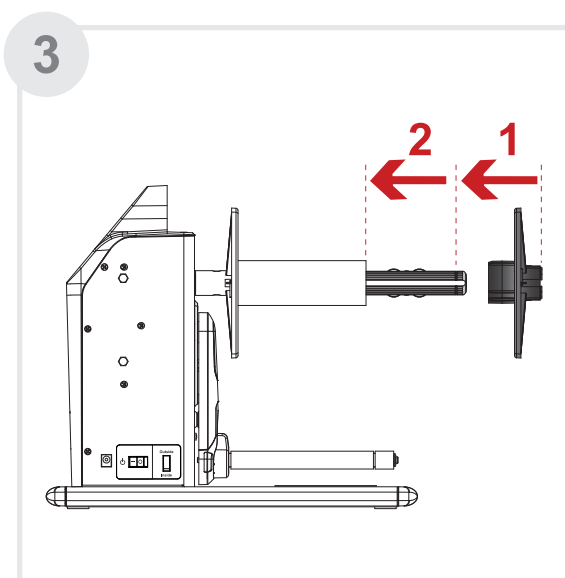
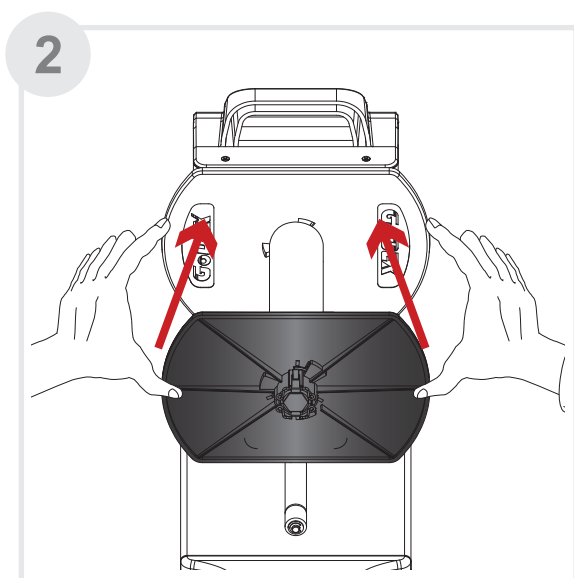
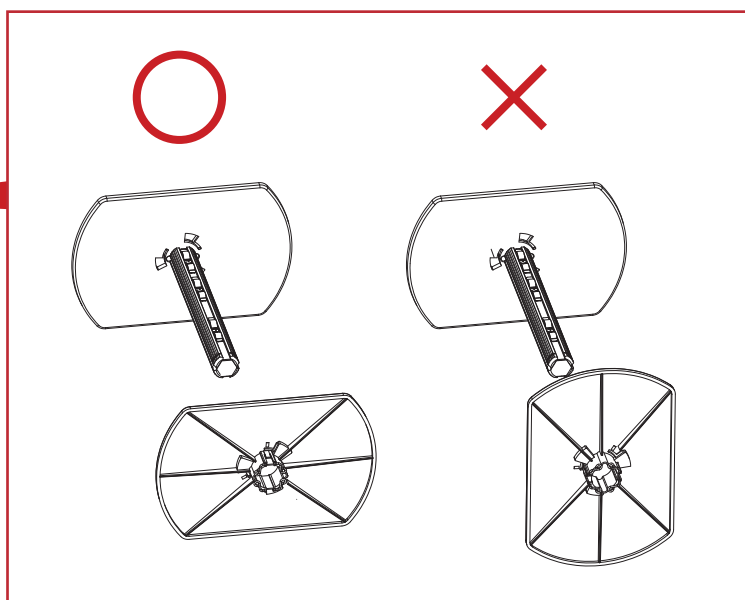
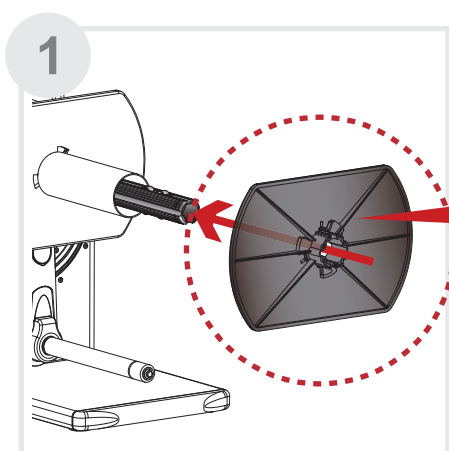
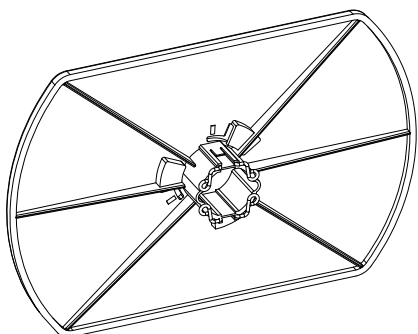


**Through the
paper press bar**



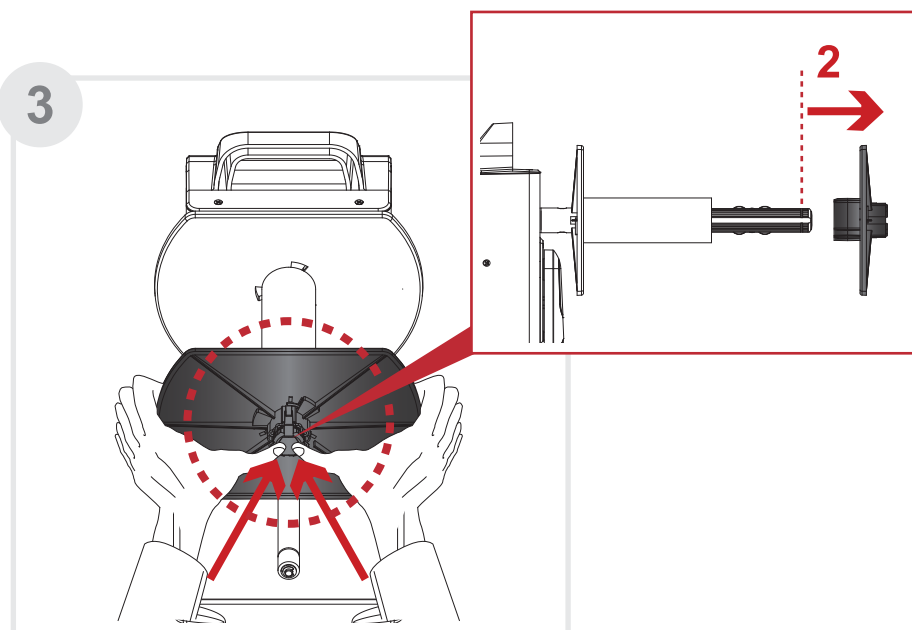
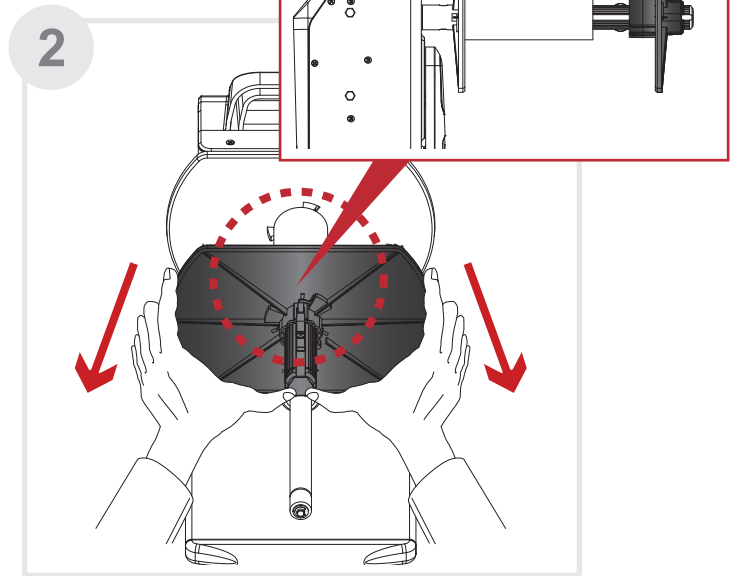
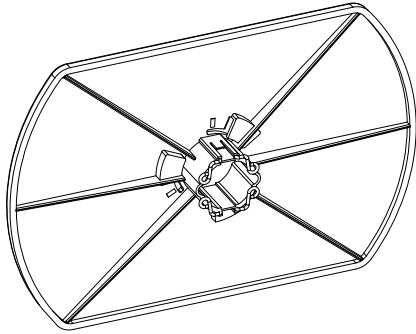
Install the Plate

Paper Stop Plate



Remove the Plate

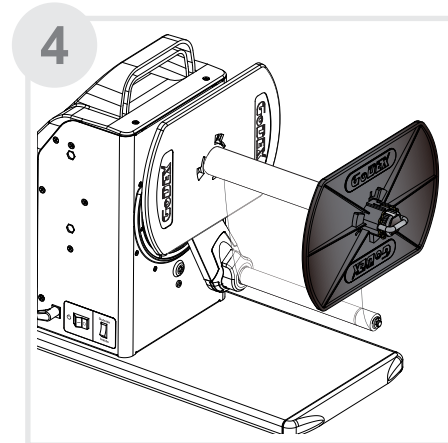
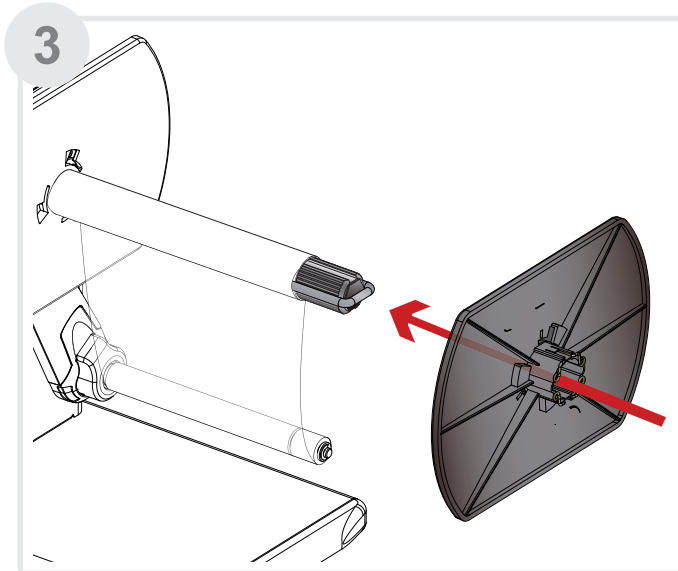
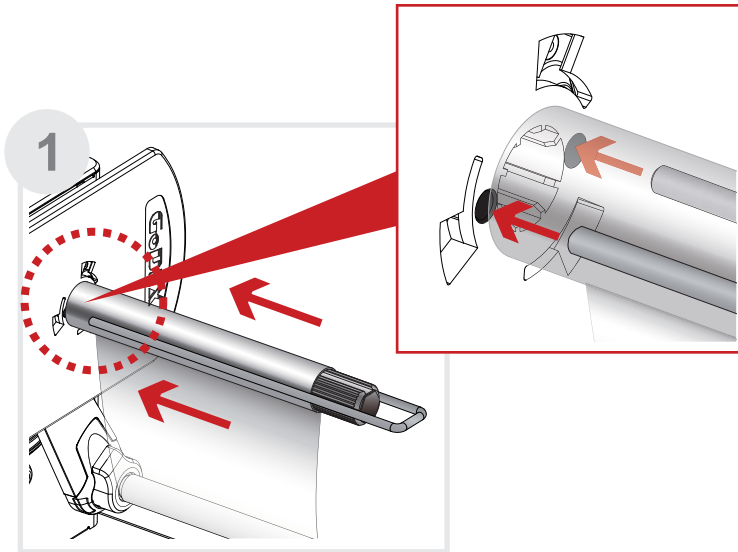
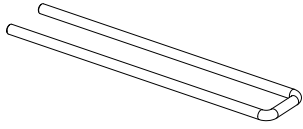
Paper Stop Plate



Label core in different sizes

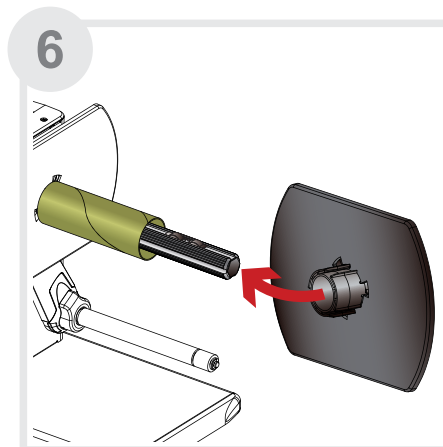
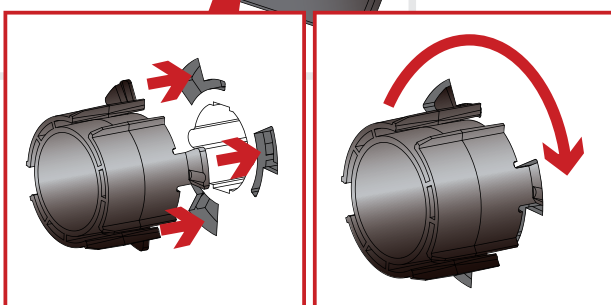
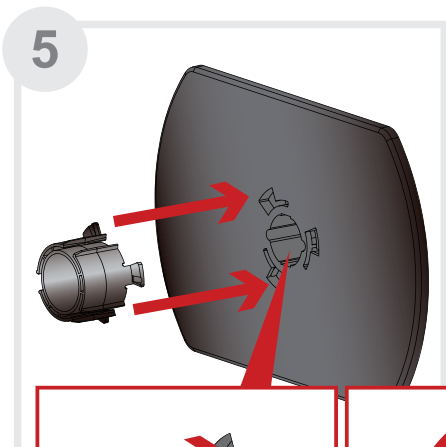
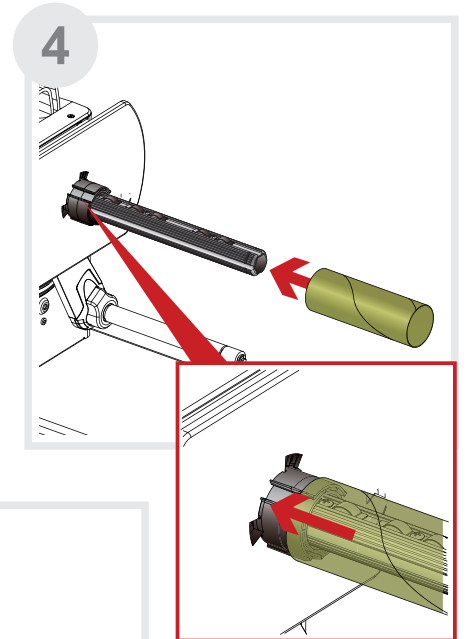
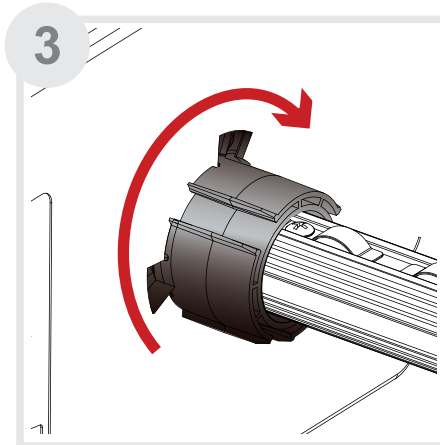
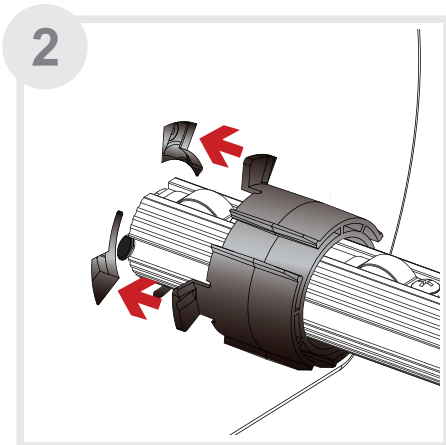
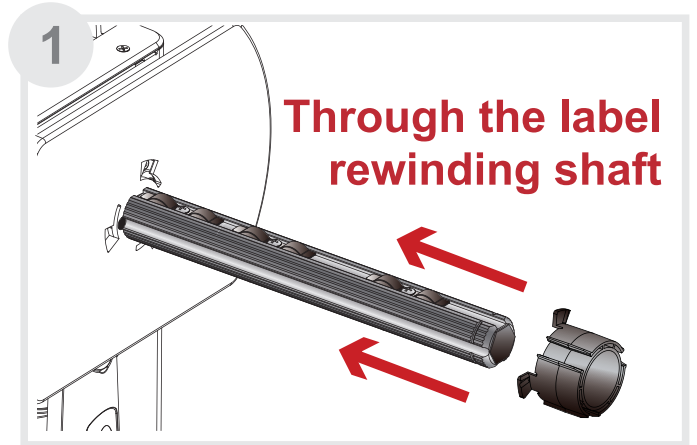
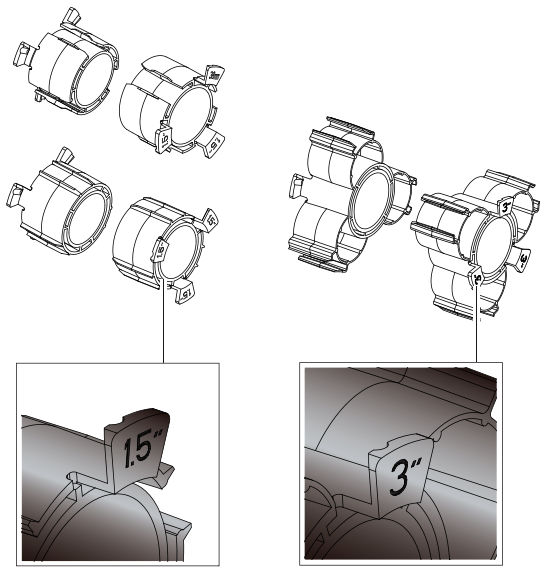
Paper Clip

for 1", to fix label in position.



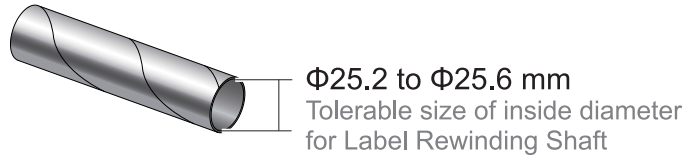
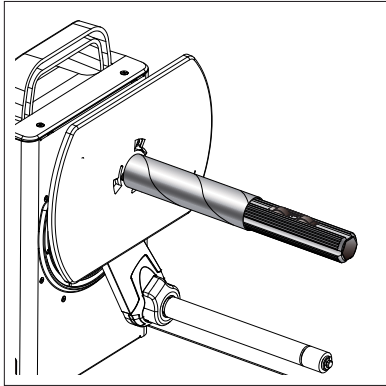
Core Adapter

for 1.5" and 3" Empty label core.

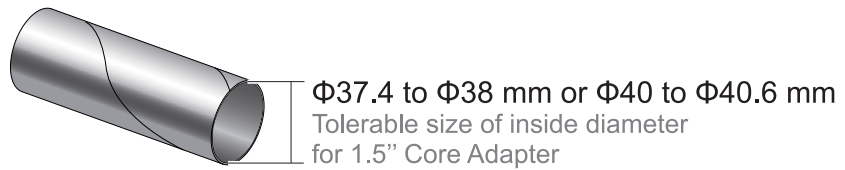
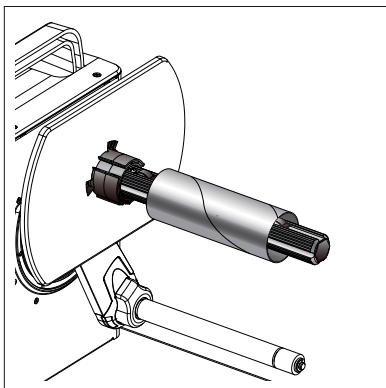


Match up the empty label core and core adapter

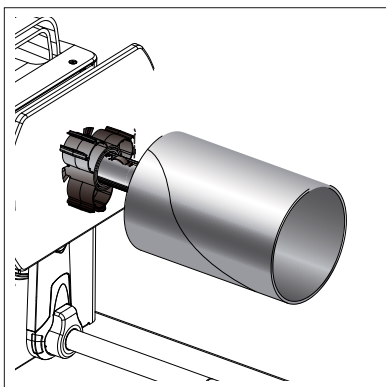
1'' Empty Label Core
with Label rewinding shaft.



1.5'' Empty Label Core
with 1.5'' Core adapter.

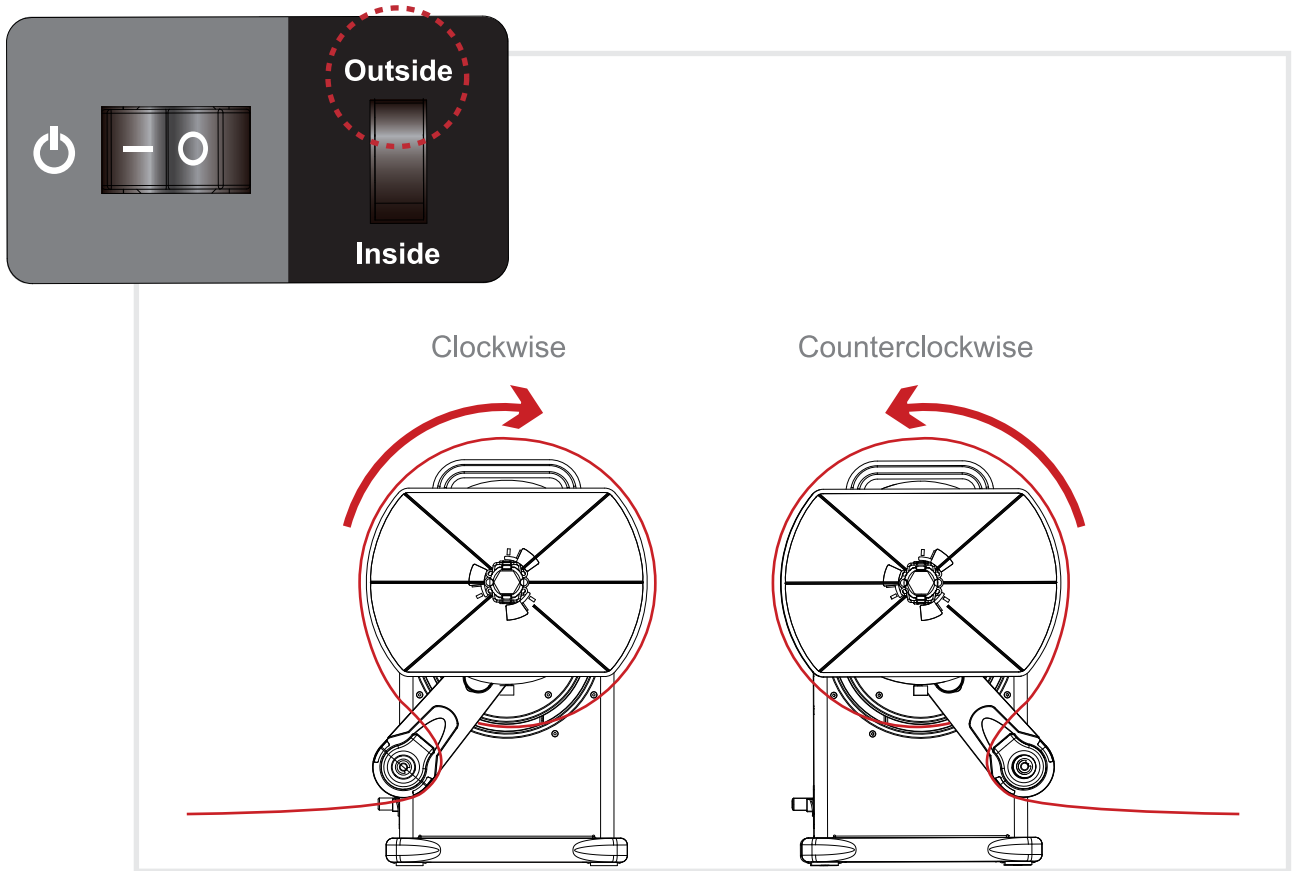


3'' Empty Label Core
with 3'' Core adapter.

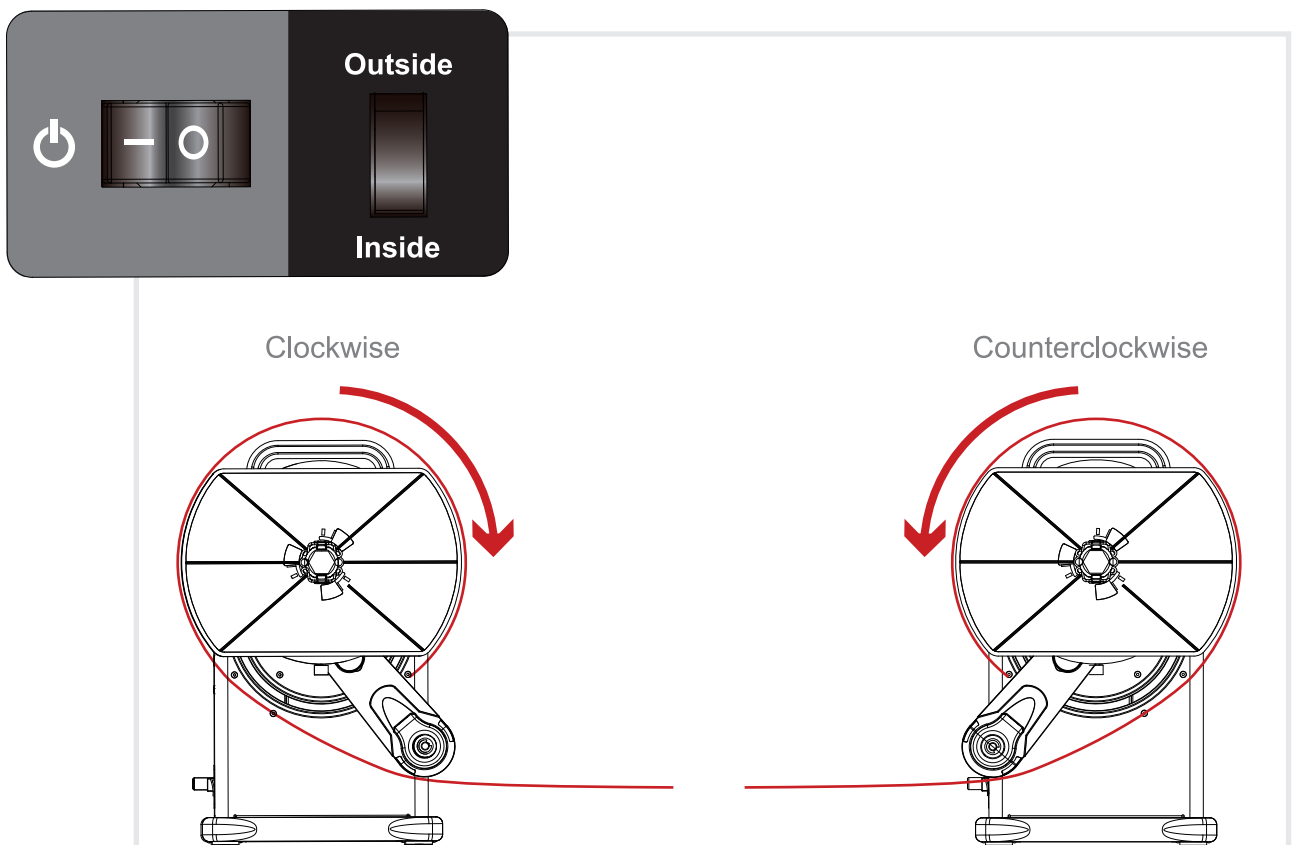


The Modes of Rewinding

Outside

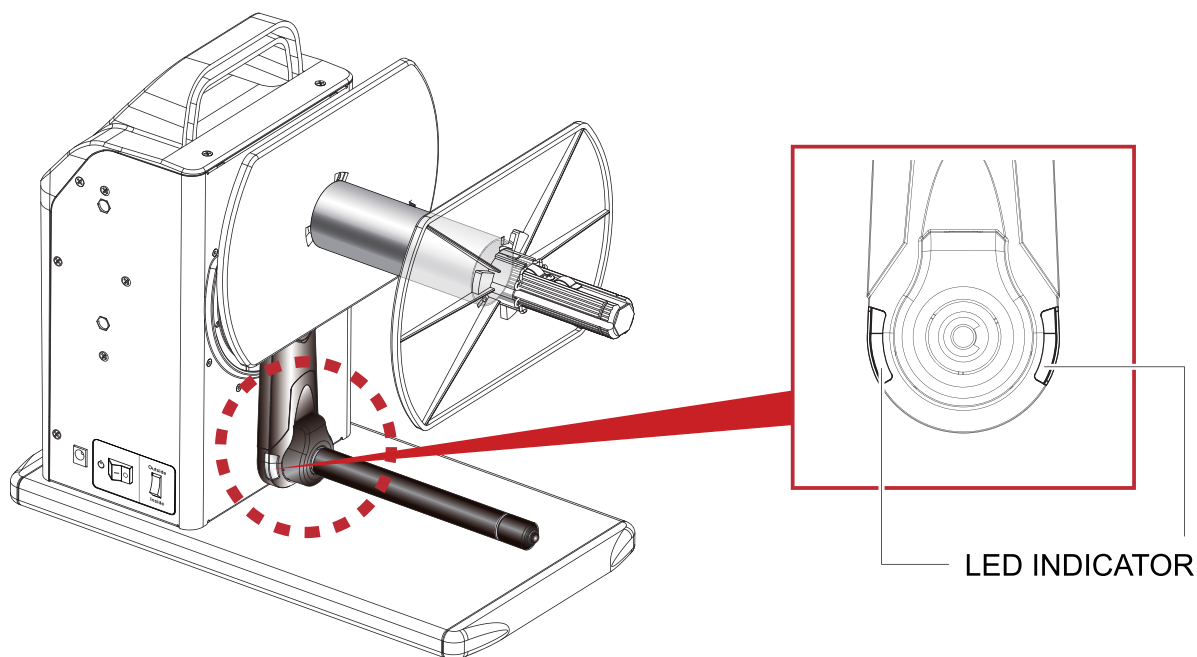


Inside



4 WHAT'S THE STATUS OF THE REWINDER

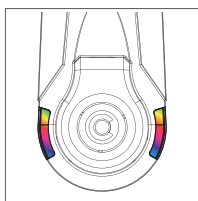
LED Indicator



STATUS

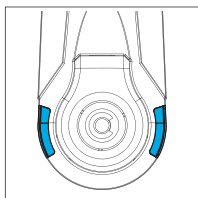
LED INDICATOR

Power ON



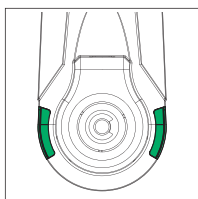
Flash

Outside



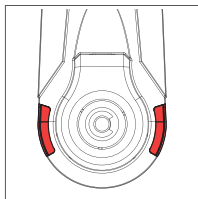
Blue

Inside



Green

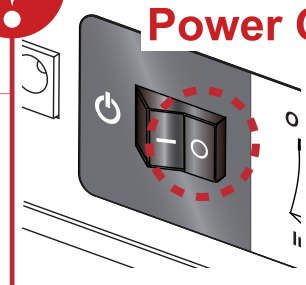
Error / Alert



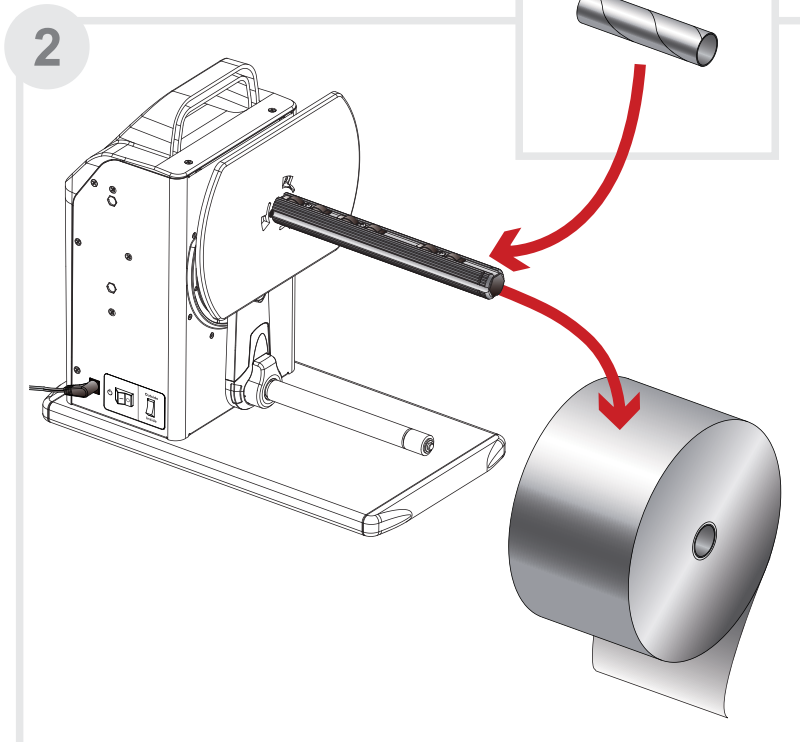
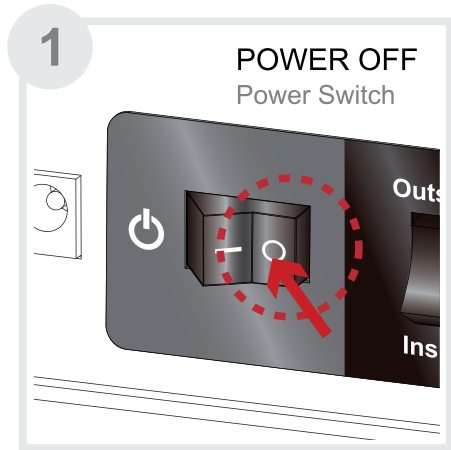
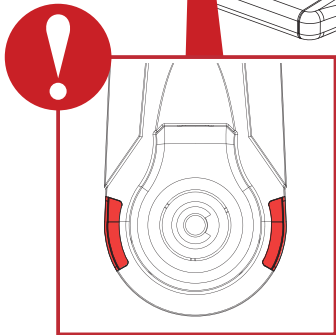
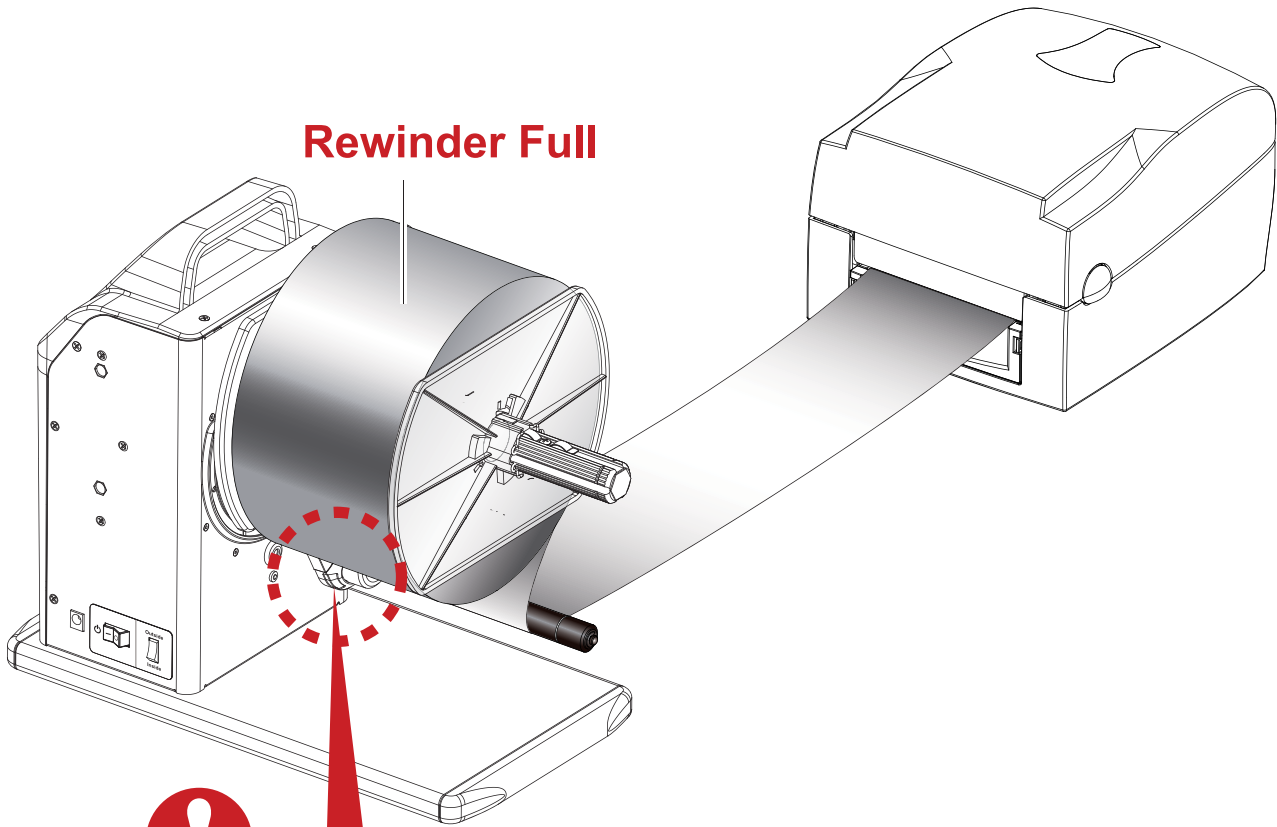
Red



Power OFF

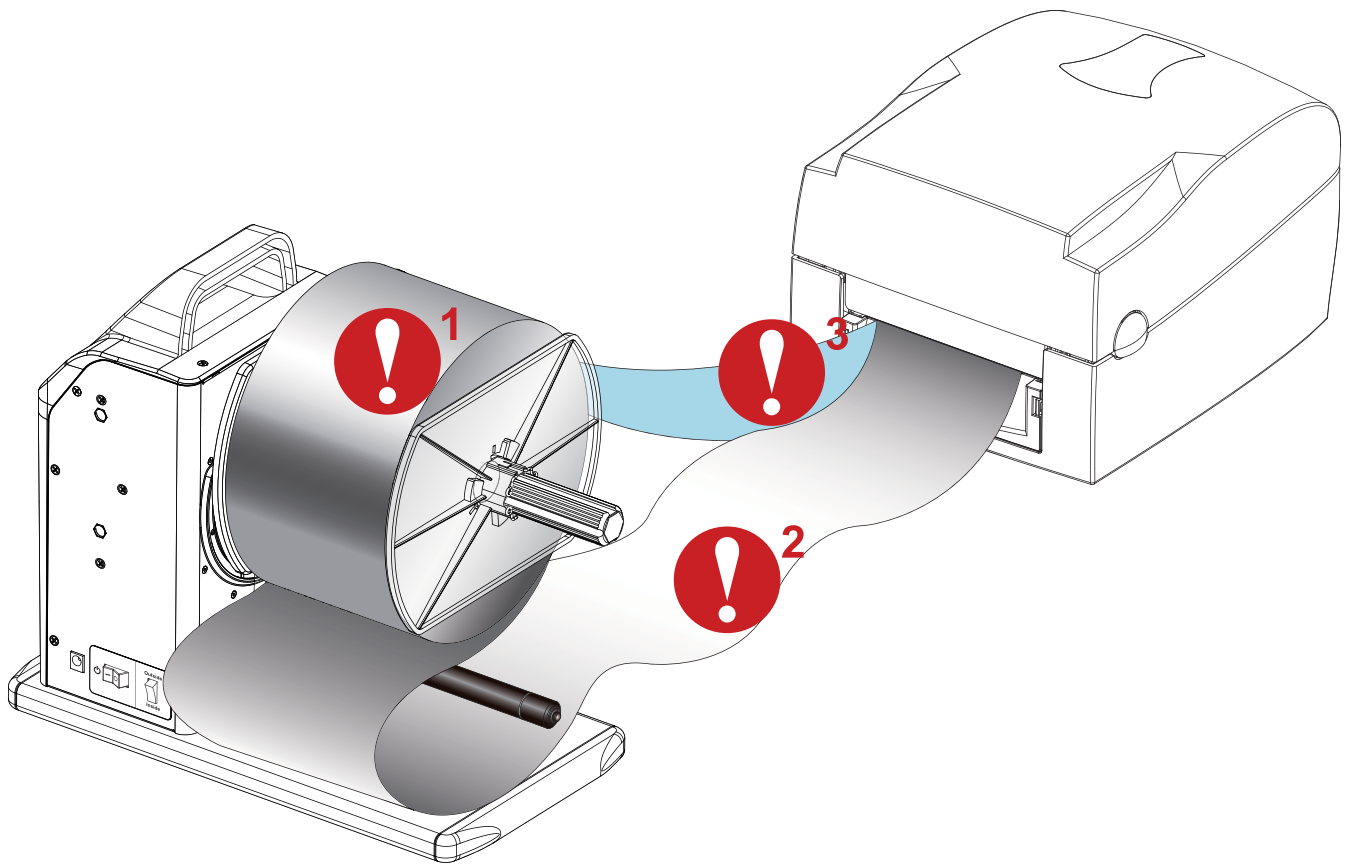


When The Rewinder Is Full



5 TROUBLESHOOTING

Error / Alert



Error /Alert

Description



Paper Full
refer to "When The Rewinder Is Full" on Chapter 4



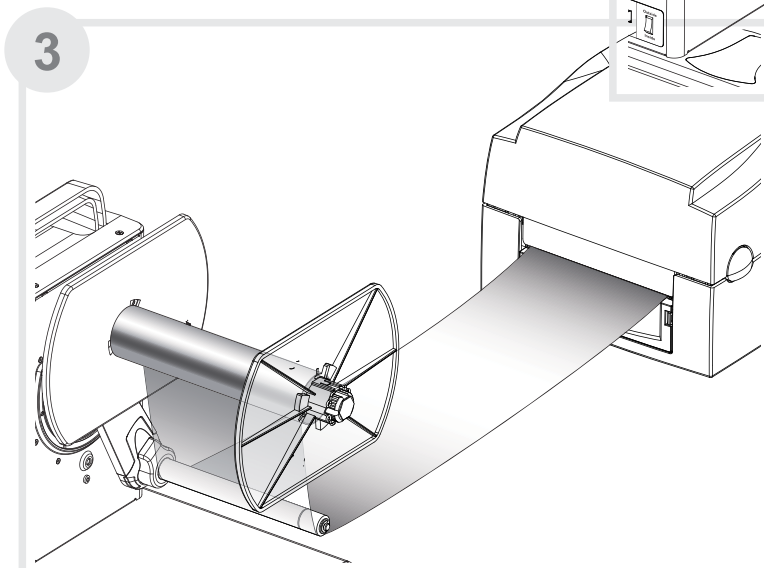
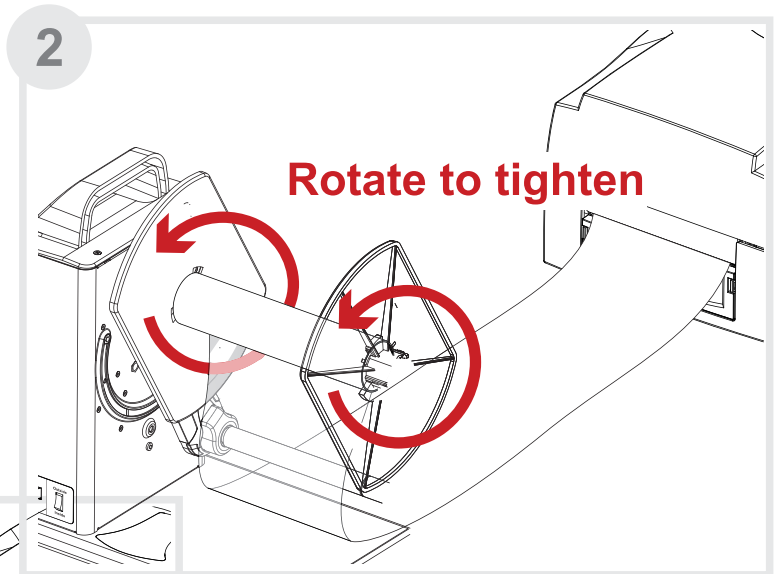
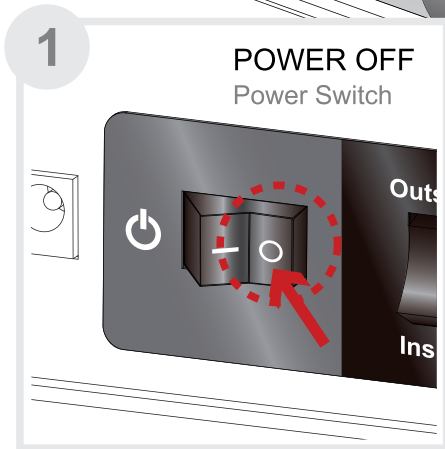
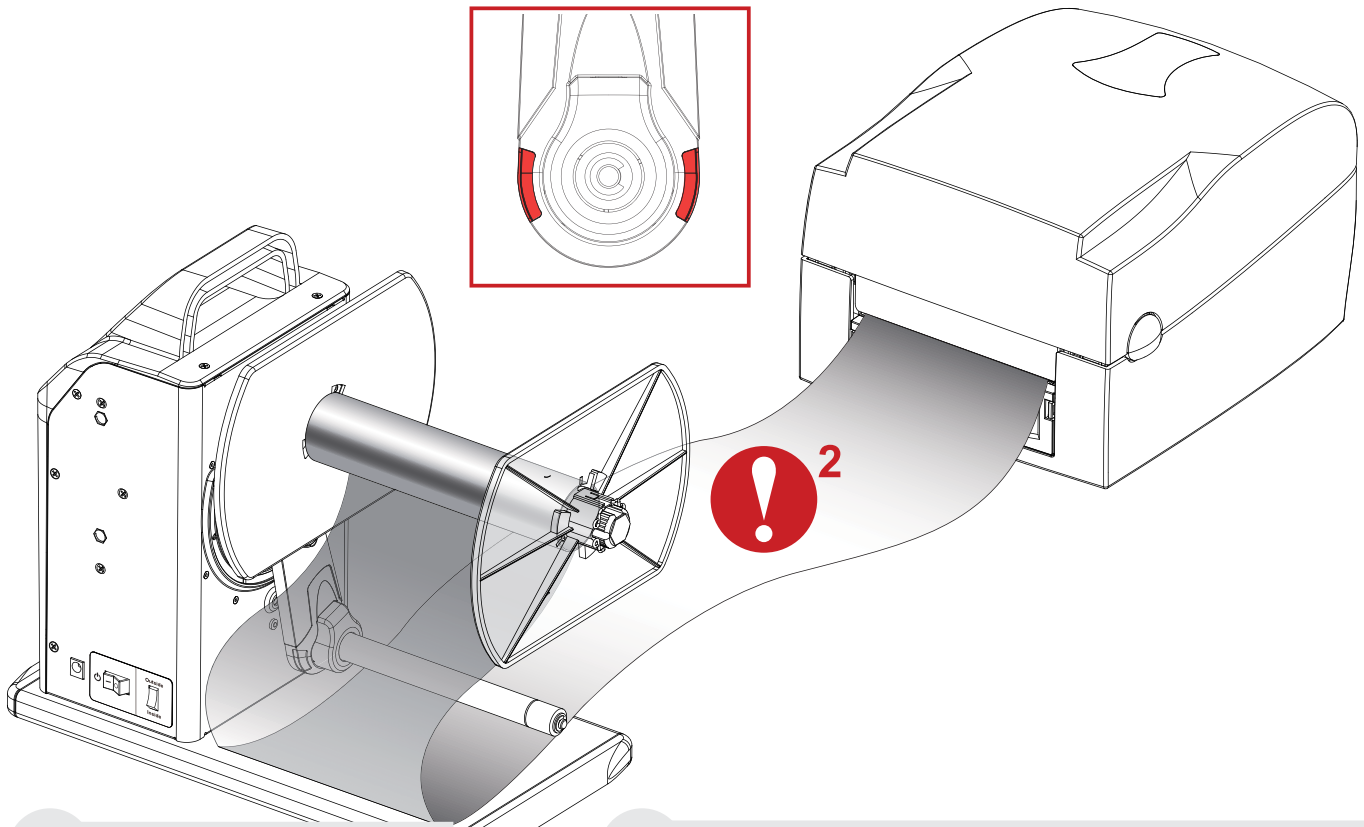
Sensing Error
refer to "Sensing Error" on Chapter 5



Idle Load
refer to "Idle Load" on Chapter 5

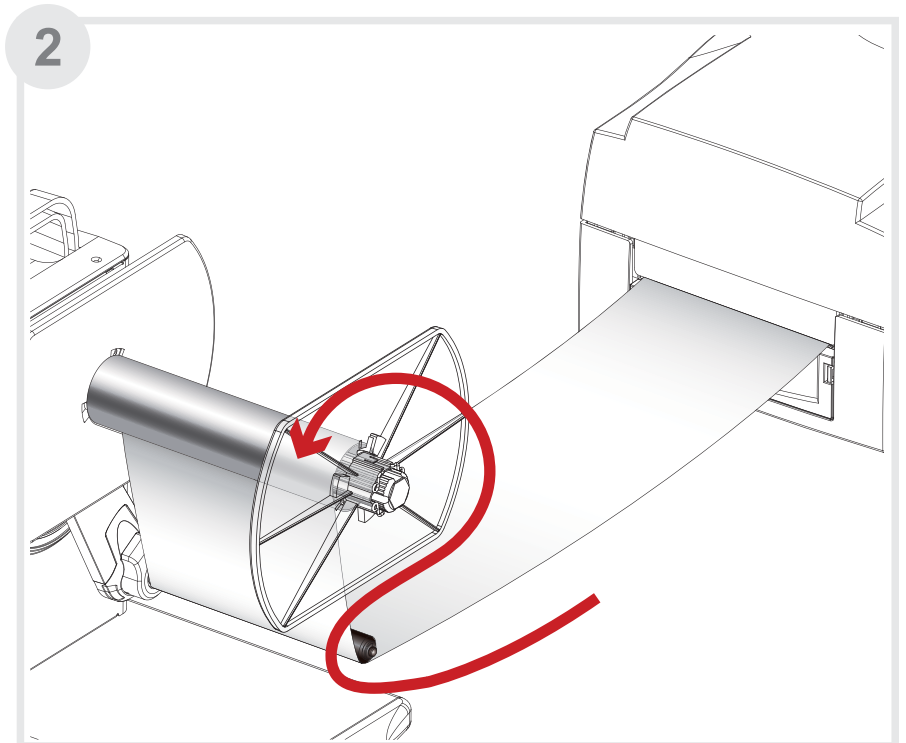
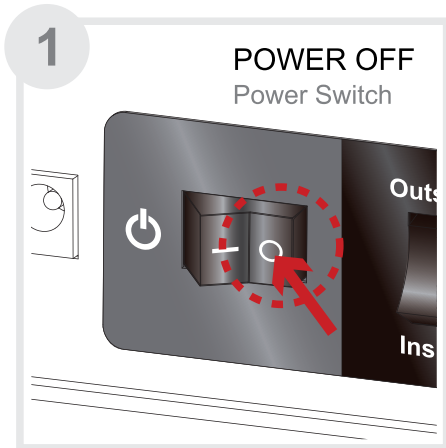
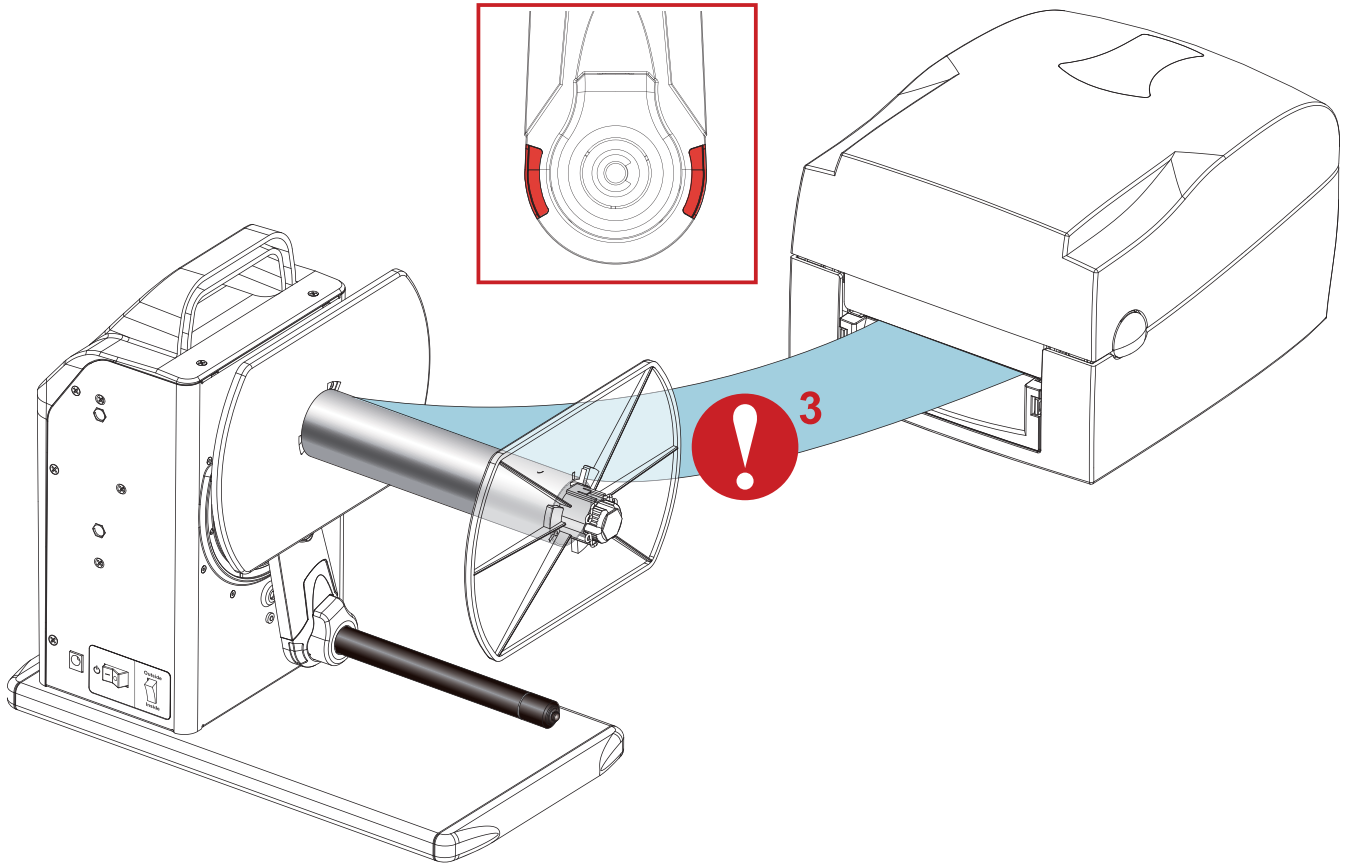


Sensing Error





Idle Load



PRODUCT SPECIFICATIONS

Model	Label Rewinder	
Paper width	7" (Max)	
Rewind Speed	12 IPS	
Label Roll	6" (Max.)	
Core Roll	Coreless 1" (25.2 to 25.6 mm) 1.5" (37.4 to 38 mm) 1.5" (40 to 40.6 mm) 3" (76 to 76.6 mm)	
Label Roll Weight	5 Kg	
Rewinding	Label Inside/Outside	
Switches	Rewind	
Motor	Hybrid Motor	
Power	100~240VAC 24W, 24V Adapter	
Environment	Operating Temp.	41°F to 104°F (5°C to 40°C)
	Storage Temp.	-4°F to 122°F (-20°C to 60°C)
Humidity	10-85% (non-condensing RH)	
Size(H*W*D)	303 mm x 180 mm x 349 mm	
Agency Approvals	CE, FCC Class A	
Weight	5 Kg (11 lb)	