

# INDUSTRY LABELS



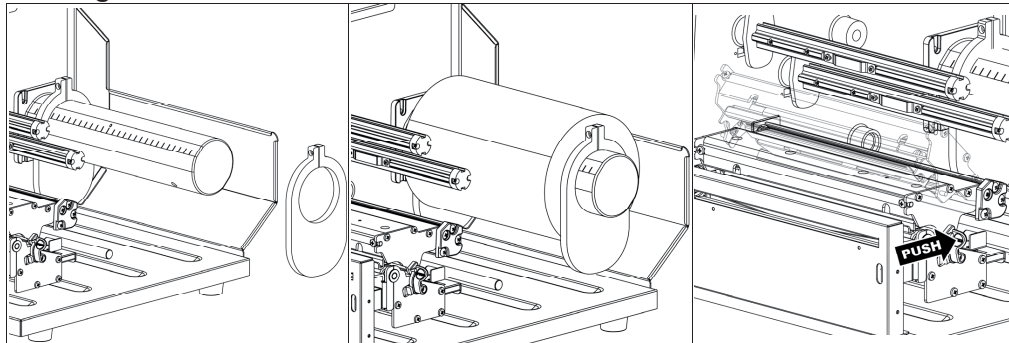
## Quick Installation Guide

MAX Systems GmbH • Am Bauhof 12 • 27442 Gnarrenburg

Tel.: +49 (0) 47 63 / 945 95 - 10 • Fax: +49 (0) 47 63 / 945 95 - 11

E-Mail: [info@maxsystems.eu](mailto:info@maxsystems.eu) • [www.maxsystems.eu](http://www.maxsystems.eu)

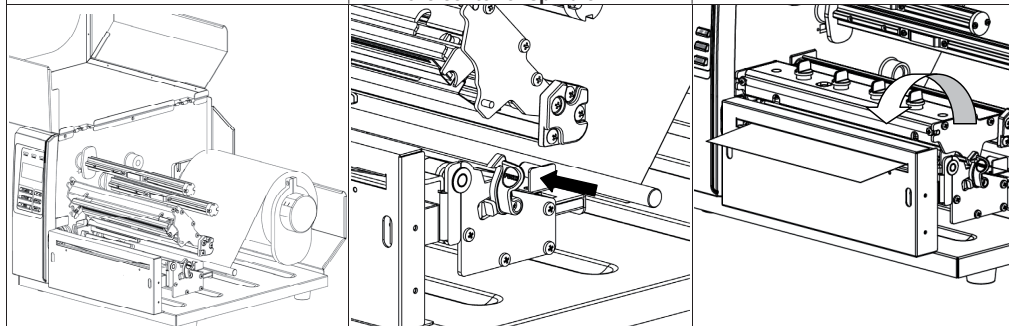
## Loading Media



(1) Remove ONE label rollguard.

(2) Place media roll on label supply spindle. Replace label rollguard.  
**Note: Make sure the media is set at the center of spindle.**

(3) Push the printhead release lever to open the printhead mechanism.

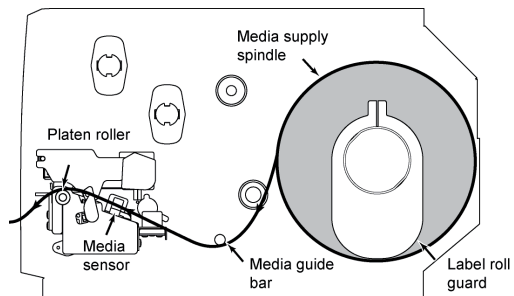


(4) Pull the leading edge of the label forward through the media guide bar past media sensor, and place the leading edge onto the platen roller.

(5) Adjust the label guide to fit label width.

(6) Close printhead mechanism, making sure the latches are engaged properly.

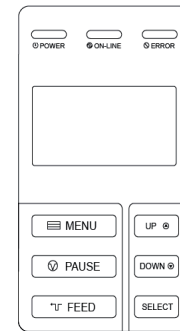
### Loading path for media



(7) Using the front display panel, set media sensor type and calibrate the selected sensor (See "Media Sensor Calibration" on facing page).

**Note: Re-calibrate the gap/black-mark sensors when changing media.**

## Control Panel



LED	Status	Indication
POWER	Off	Printer power off
	On	Printer power on
ON-LINE	On	Printer is ready
	Blinking	Printer is paused
ERROR	Off	Printer is ready
	On	Carriage open OR Cutter error
	Blinking	No paper, Paper jam OR No ribbon

Keys	Function
MENU	1. Enter the menu system 2. Once in the menu system, return to previous menu. If at menu root, exits the menu system.
PAUSE	Pauses or resumes printing
FEED	Advances one label
UP	Scroll up the menu options
DOWN	Scroll down the menu options
SELECT	Select the currently highlighted option

MAX Systems GmbH • Am Bauhof 12 • 27442 Gnarrenburg

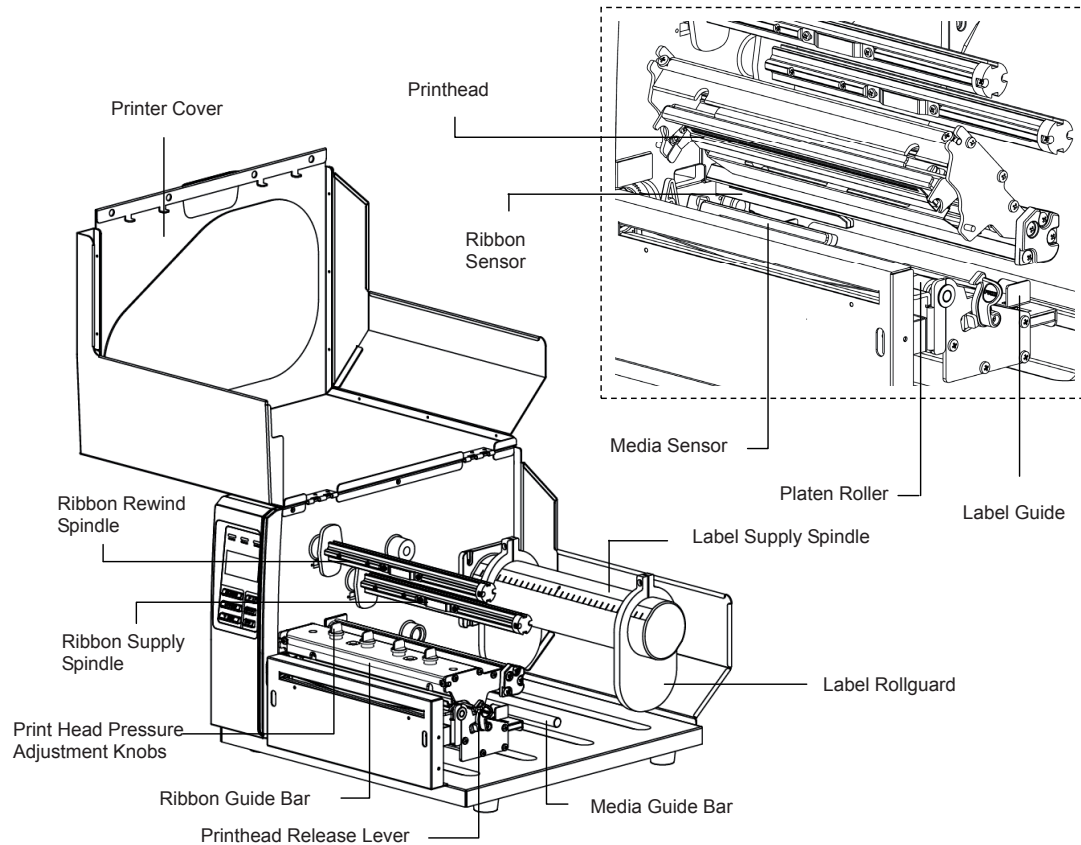
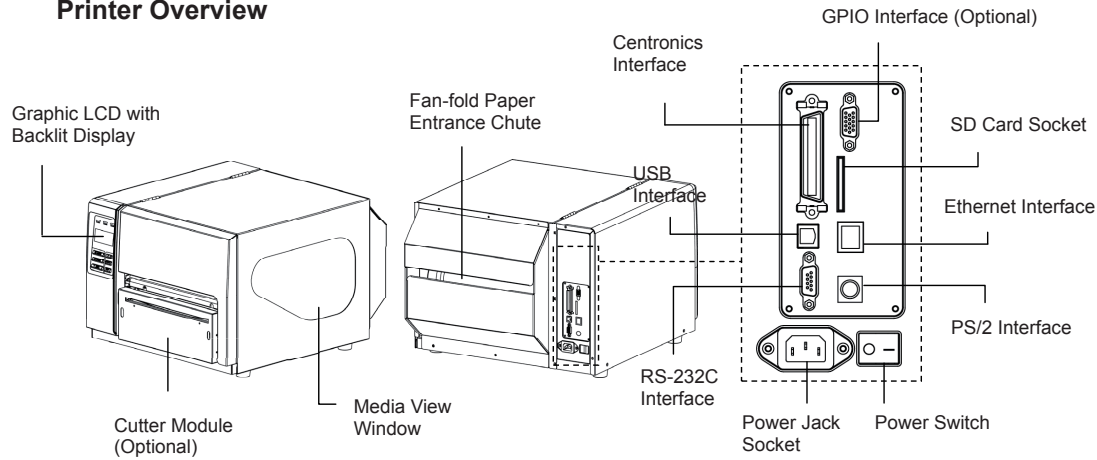
Tel.: +49 (0) 47 63 / 945 95 - 10 • Fax: +49 (0) 47 63 / 945 95 - 11

E-Mail: [info@maxsystems.eu](mailto:info@maxsystems.eu) • [www.maxsystems.eu](http://www.maxsystems.eu)

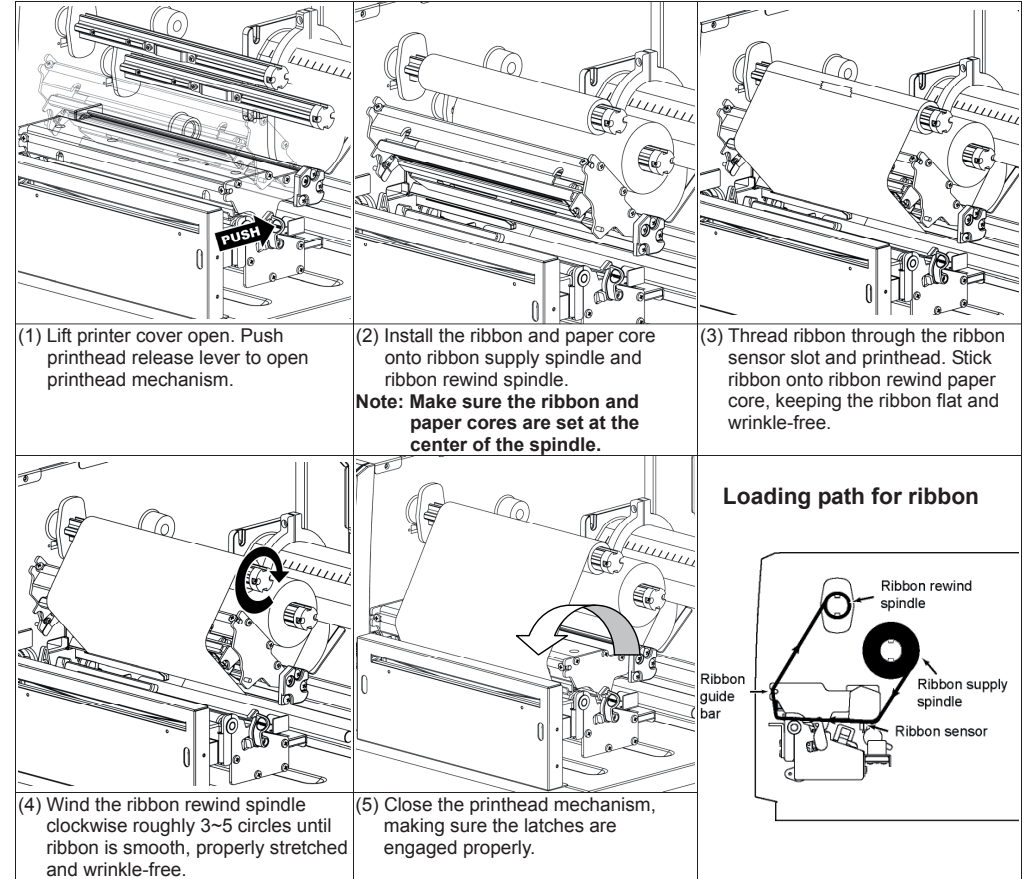


# Quick Installation Guide

## Printer Overview



## Loading Ribbon



## Replace Ribbon

