

**„SignMax“ software
and
„LabelMax SP2“ printer driver
installation manual**



Index

1	TO DO BEFORE INSTALLATION	3
2	INSTALLATION OF THE APPLICATION.....	4
3	INSTALLATION OF THE PRINTER DRIVER.....	6
3.1	USB.....	6
3.2	CENTRONICS.....	6
4	USER RIGHTS FOR THE DIRECTORY "SIGNMAX"	7
5	EXPORTING REGISTRY ENTRY	8
6	QUICKSTART	9
7	BASIC SETTINGS IN THE SIGNMAX SOFTWARE	10

1 To do before installation

To start the installation process, special license files are required. You receive these files from your distributor during or before the initial installation. If you didn't receive these files or you don't have these files anymore, please contact your distributor first!

You may also call:

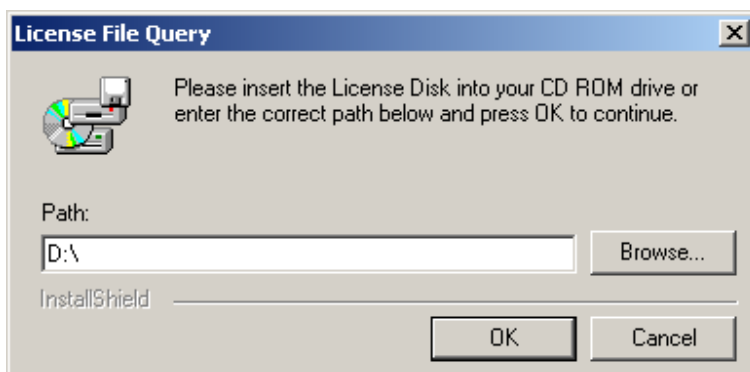
MAX MEYER Service-Tel. +49 (0) 47 63 – 94 59 5 - 0

Please copy the license files in a directory on your computer (e.g. "My Documents").

Important: To install SignMax software and printer driver, administrative rights are required. Please contact your IT department before installation.

2 Installation of the application

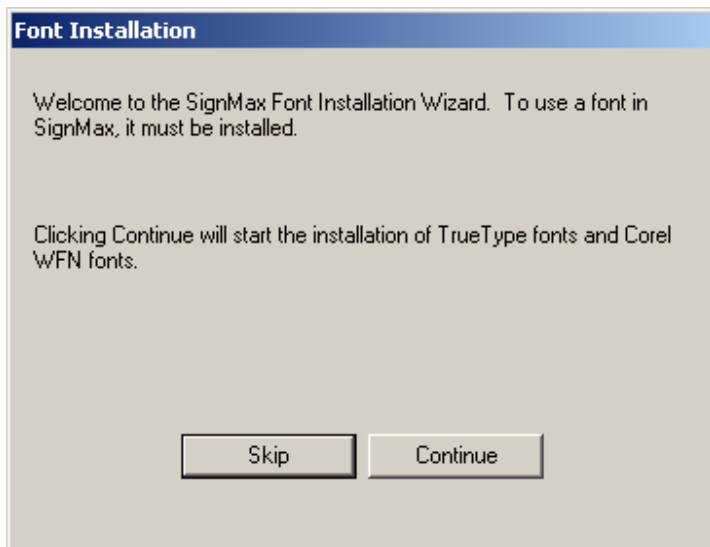
Insert the SignMax DVD. In case that the installation window does not appear automatically, please start the “Setup.exe” in the root directory of the DVD.
At first select “SignMax”.



Use “Browse” to enter the directory in which the license files are located (Extract the “ZIP” – archive before!).

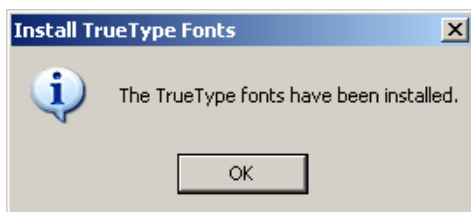
Select the installation path. It is highly recommended to keep the default location **(C:\SignMax\SignMax)**. Follow the instructions of the wizard. Select "full installation" as installation mode.

During the installation process the font installation window will appear.



Please install the fonts by clicking on "Continue". The installation of the fonts is necessary for a proper operation of SignMax.

Note: If you like to add new fonts on your computer later, they are not automatically available in SignMax. You will have to re-install the new fonts with "File", "Install" and "Fonts" in SignMax software after finishing the installation process.



Confirm the message "The True Type fonts have been installed" by clicking on OK. Follow the instructions.

After the installation is completed, you could restart the computer. However, it is not necessary.

Important note: Please keep in mind that after restarting the computer you still need admin rights to be able finishing the installation process.

Now start again the Setup.exe on your SignMax-DVD and install the clipart (item 2). The clipart files include the symbol library (e.g. warning signs) and templates for labels. On our website www.max-meyer.eu you will find updates regularly for free.

Important: The clipart files need to be installed in the same directory as the software (by default C:\SignMax\SignMax). Normally, the clipart installation automatically finds the correct directory.

3 Installation of the printer driver

There are two ways to connect the Printer; USB or centronics.

3.1 USB

- Turn off the printer, connect the appropriate cable, and then turn on the printer.
- The Windows Add Hardware Wizard will automatically detect the printer and display a dialog that allows you to install a driver. Click Next and install the driver using this wizard.
- The driver should now be installed.

3.2 Centronics

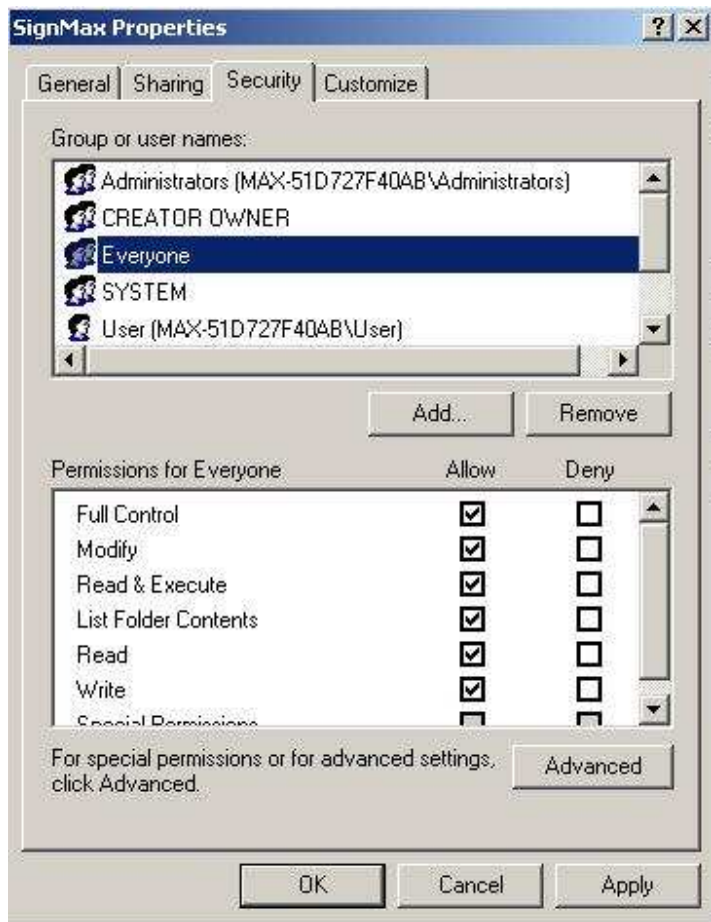
- Turn off the printer, connect the appropriate cable, and then turn on the printer.
- Run the "Driver Wizard" utility from the SignMax DVD
- Select „Install Printer Drivers" and complete the wizard.
- The driver should now be installed.



Note: The printer name should not be renamed. If this can not be avoided, the printer has to be renamed in the signlab71.ini as well (C:\SignMax\SignMax).

4 User rights for the directory "SignMax"

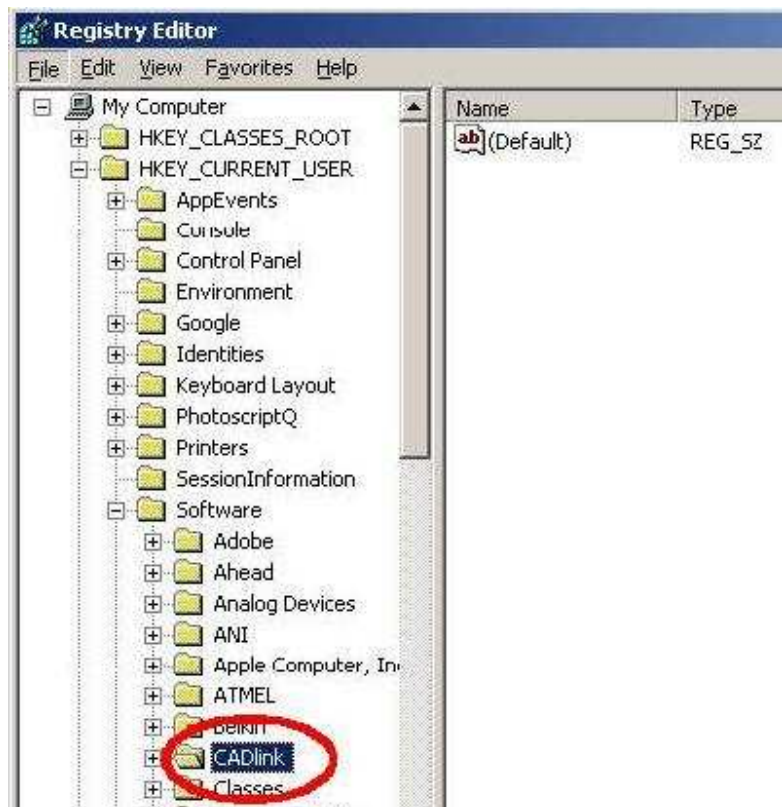
Every user who works with the SignMax software on the computer needs "Full Control" to the directory SignMax. Alternatively, you can assign all rights to the user "Everyone" as shown below. If there isn't a user "Everyone" on your computer, you can add it for yourself ("Add", then type "Everyone" and confirm)



5 Exporting Registry Entry

If using SignMax software with multiple user accounts, a certain registry entry will have to be added to the registry. Save this .REG file to a place where every user of the software has access to.

The following registry entry needs to be exported:



This newly created registration file has to be executed when a new user registers.

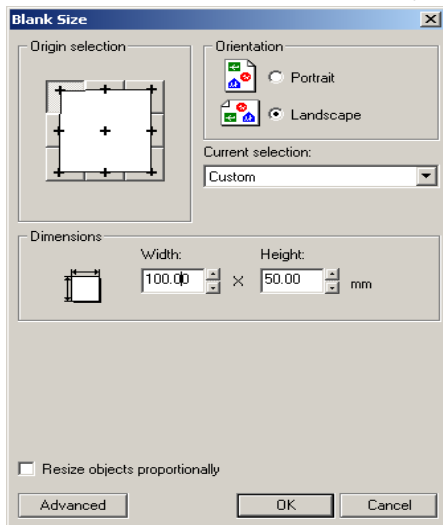
Now you can connect the USB-dongle and start the SignMax software.

6 Quickstart

This Quick Start is only a very brief instruction. The detailed instructions are included on the DVD under "instructions".

The size of a label

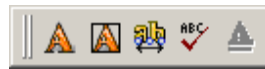
Set the label dimensions via "Layout", "Blank Size..." by entering its width and height in mm.



Now click on OK. The label is now shown as a grey frame on a white background. Everything inside of the blank area will be printed and after printing the LabelMax SP2 will cut off the tape (e.g. after 100mm as shown in the picture).

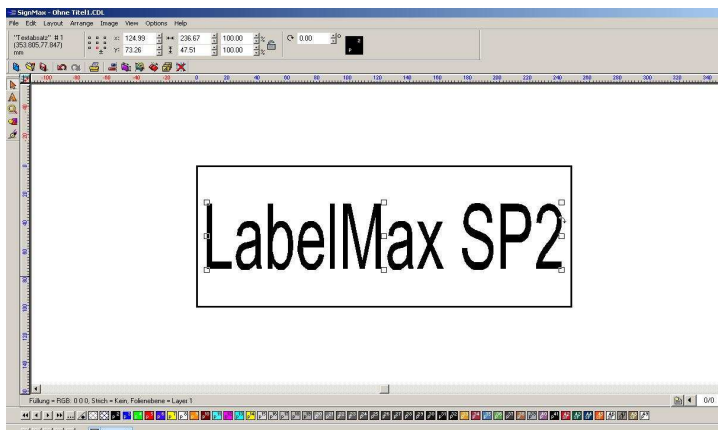
The content of the label – Text

Click in the left menu bar on "A", and then again at the first "A" in the sub-menu.



Now click with the mouse on the place where you want to write a text and enter your text. Your text will appear in a blue dashed frame - you are in the text mode. In this mode you can see all the parameters that have an effect on your

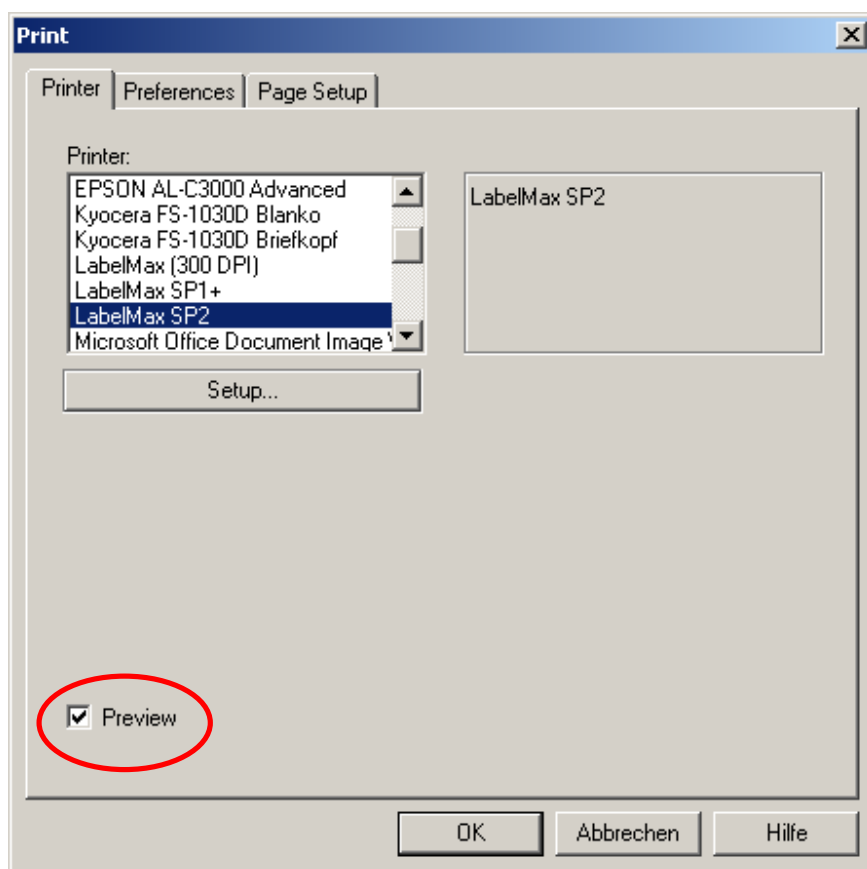
text. In order to change the parameters, move with the mouse on your text to select it (while holding the left mouse button!). Now you can change e.g. the font size, the font and the line spacing for the marked text. A click next to the text frame will take you into the object mode. Now you can see all the parameters which classify your text block as an object, such as colour, size and position of the text. Click once on the text and you can change these parameters; double-click on your object and you get back into text mode.



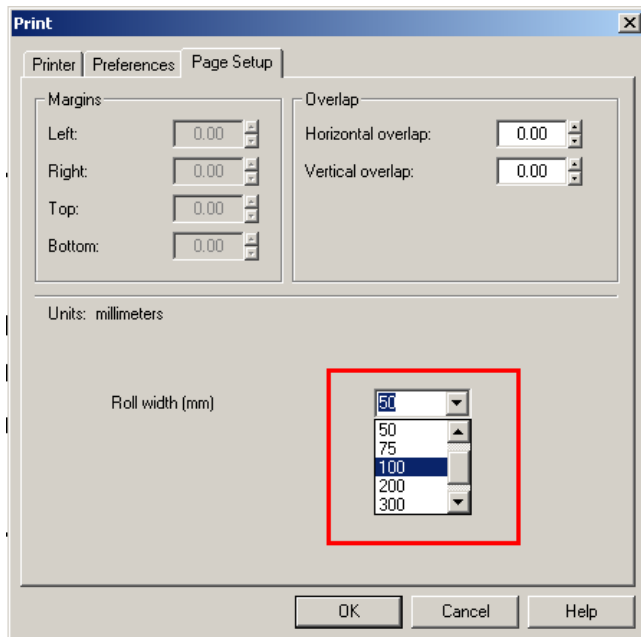
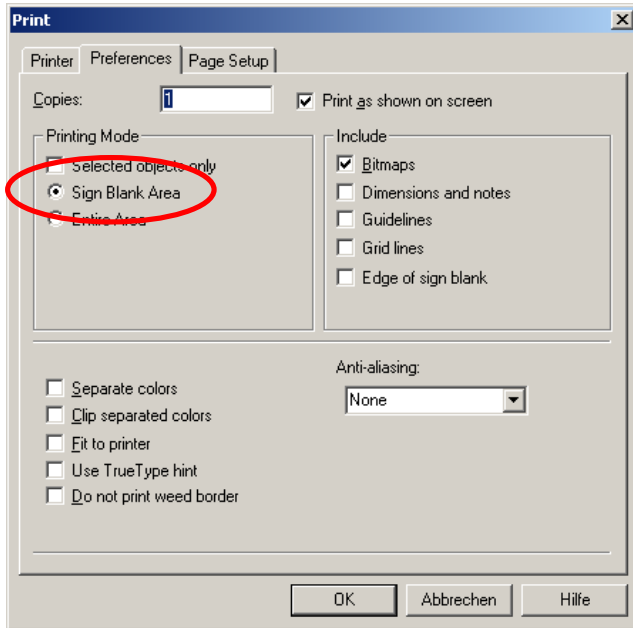
Move the text by holding the left mouse button in the centre on the sign blank area. Now you can print your label.

7 Basic settings in the SignMax software

Select the correct printer (here: Label Max SP2) after entering the print menu by clicking on “File” > “Print” and activate the preview.



Switch to the tab "Preferences" and select in printing mode the "Sign Blank Area".



Very important is the field "Roll width".
Here it is essential to select the correct roll width
of the tape which is used in the printer right now.

Please note that these settings have to be set up for each user.
We wish you success with our software and if you have any problems please contact us.